



PRODUCT UPDATES & COMMUNICATION

ALGARVE

NEWSLETTERS 2026

- 05.2026 - Outdoor glass samples
- 04.2026 – Change in standard colours
- 04.2026 – Glass sliding panels
- 04.2026 – Wall mounting Aero and Algarve
- 04.2026 – AutoCAD drawings
- 03.2026 – Product updates on RIO
- 03.2026 – Transport costs Service Outdoor
- 03.2026 - Hourly rate technicians
- 03.2026 – Why a service case?
- 02.2026 - Colour range: modification of Tiger powders
- 02.2026 - New - CosySound panels
- 01.2026 - Change in standard colours
- 01.2026 – New: Algarve power socket
- 01.2026 – Outdoor Curtains
- 01.2026 - Simplified returns process

NEWSLETTERS 2025

- 12.2025 – Update on glass sliding panels
- 12.2025 – Outdoor Curtains – Back-orders
- 12.2025 – Dimmable RTS heating receiver
- 12.2025 - 'Winter is coming'
- 11.2025 - Discontinuation: Axalta AE03107070320
- 10.2025 - Camargue & Algarve Demo Cases
- 09.2025 - New product videos available now
- 09.2025 - Product updates Aero & Algarve
- 08.2025 - Update powder colour codes
- 06.2025 - Updates glass sliding panels
- 06.2025 - Loggia Privacy: adjustable damper
- 06.2025 - Update user manual Outdoor Loggia
- 06.2025 - Indoor colour guide: Powder code SA021E (former AE80019164421)
- 05.2025 - Shop-In-Shop: wrong colour sample RAL 8014
- 04.2025 - Color Guide
- 02.2025 - Warranty Outdoor: new registration procedure
- 02.2025 - Algarve Fixscreen: backorders

- 02.2025 - Renson Service return policy
- 01.2025 - Color guide 2025
- 01.2025 - RIO help texts
- 01.2025 - Order separate profiles from price list

NEWSLETTERS 2024

- 12.2024 - Outdoor warranty 2025
- 12.2024 - Outdoor Loggia: product updates
- 12.2024 - Functioning of rain sensor
- 11.2024 - Customized Solutions
- 10.2024 - Packaging: guidelines for preventing sun damage
- 09.2024 - Standard colours
- 09.2024 - Algarve: Drive rod adjustment
- 09.2024 - RIO updates - Algarve Lite
- 08.2024 - Algarve Lite
- 05.2024 - Benefits of an Outdoor Service Case
- 04.2024 - Loggia Linea
- 04.2024 - Loggia (Double) Canvas
- 04.2024 - Dimmable io heating receiver
- 04.2024 - Use of the colour guide
- 02.2024 - Outdoor curtains
- 02.2024 - Glass sliding wall

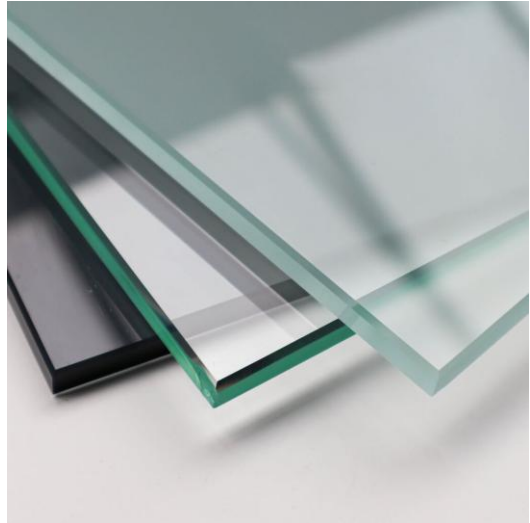
NEWSLETTERS 2026

05.2026 - Outdoor glass samples

As you know, we recently launched a new type of glass: *smoked glass*. This type of glass creates a warm, stylish look and adds just that little bit of extra character.

To clearly demonstrate the difference between transparent, frosted and smoked glass, we now also have **handy samples**. Each pack contains all three types of glass, each measuring 10 by 10 cm. This allows you to let customers see and feel for themselves which best suits their project. The samples will be available in RIO starting June 5 and can be easily ordered via your marketing budget.

RIO: POS Outdoor Glass samples
€ 40.00 / \$ 57.20 - G390013 / 2003187



[Back](#)

04.2026 – Change in standard colours

There is an additional update to our standard colours. One Shop in Shop colour has been removed from the standard colour group. This means there are now **three Shop in Shop colours that are no longer standard.**

These are the following colours:

- AE30017702420 - RAL 7024 - Graphite Grey Polyester Architectural AE
- AE70018720125 - RAL 8014 - Sepia Brown Polyester Architectural AE
- AE03056600820 - RAL 6008 - Axalta RAL6008 Fine Texture

Both the colour guide and RIO have been fully updated. You can find this information as always on the Professional Portal. Please take this change into account when placing future orders.

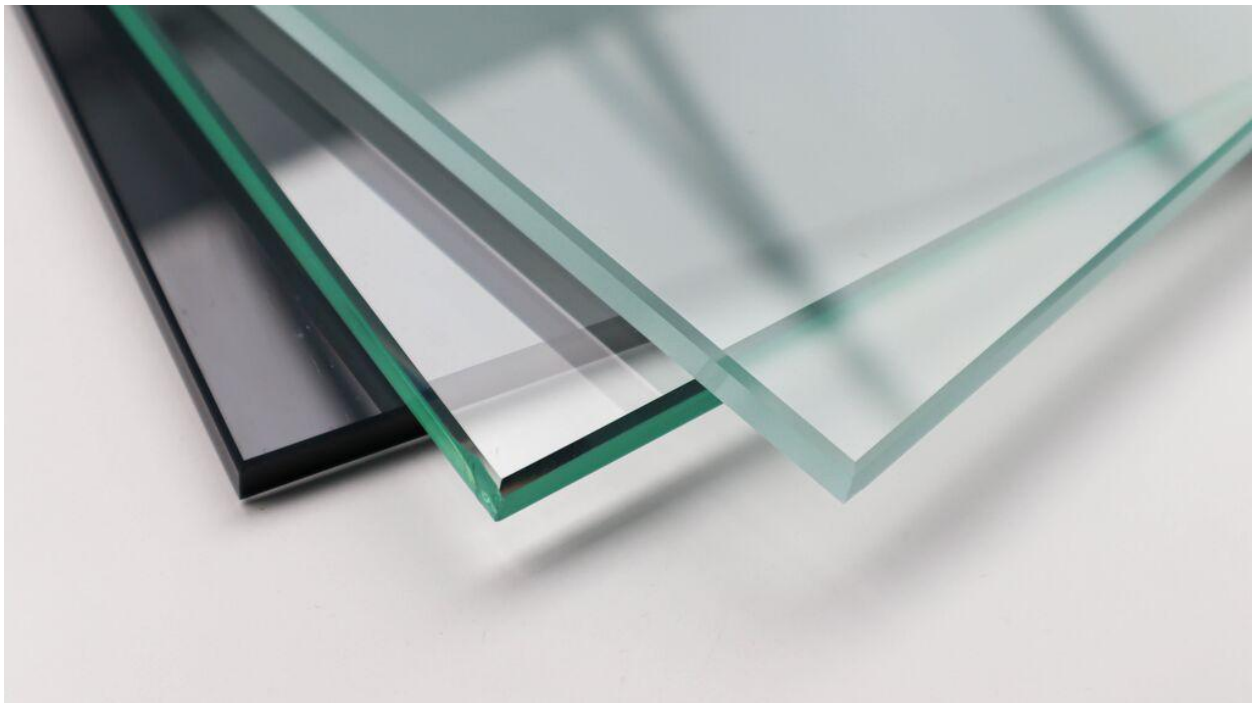
[Back](#)

04.2026 – Glass sliding panels

As previously announced, our sliding panels are now also available in **smoked glass**. This gives the range an extra stylish and modern look.

To support this launch, we are currently working on **small POS samples**. These will be available to order soon. More information will follow.

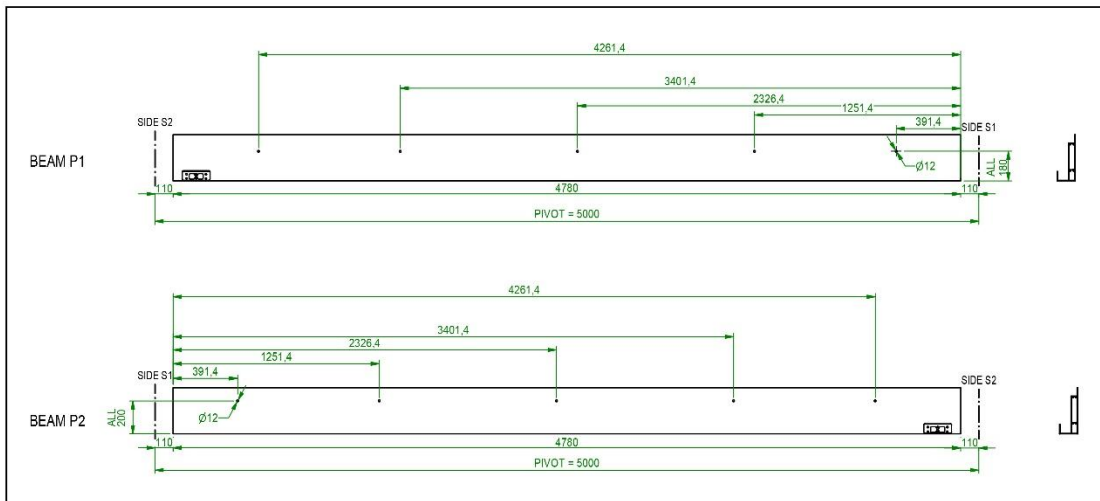
In the meantime, we are already providing visual material in [GIF](#) and [photo format](#). You can download these and use them immediately on your own channels to highlight the new sliding panels.



[Back](#)

04.2026 – Wall mounting Aero and Algarve

From now on, you can easily find the position of the wall mounting holes for Aero built in or Algarve surface mounted during the quotation phase. This information is included on the second page of the overview drawings. This provides more clarity and smoother preparation for installation. If you have any questions, feel free to contact us.



[Back](#)

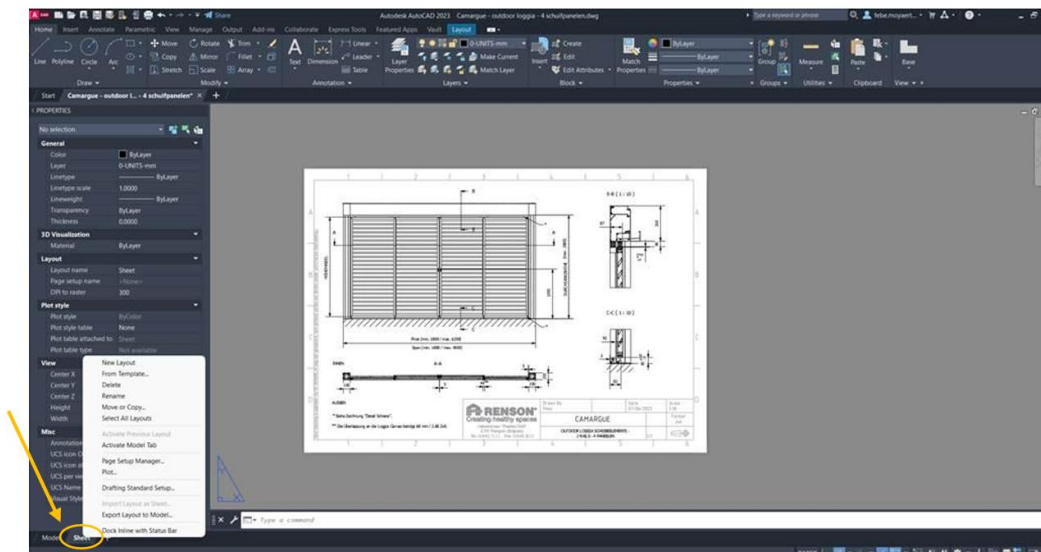
04.2026 – AutoCAD drawings

Do you want to use AutoCAD drawings from our Professional Portal, but copying them to a new file does not always work. To help you continue quickly and smoothly, we have added a short step by step guide that allows you to transfer drawings to a new file without any issues.

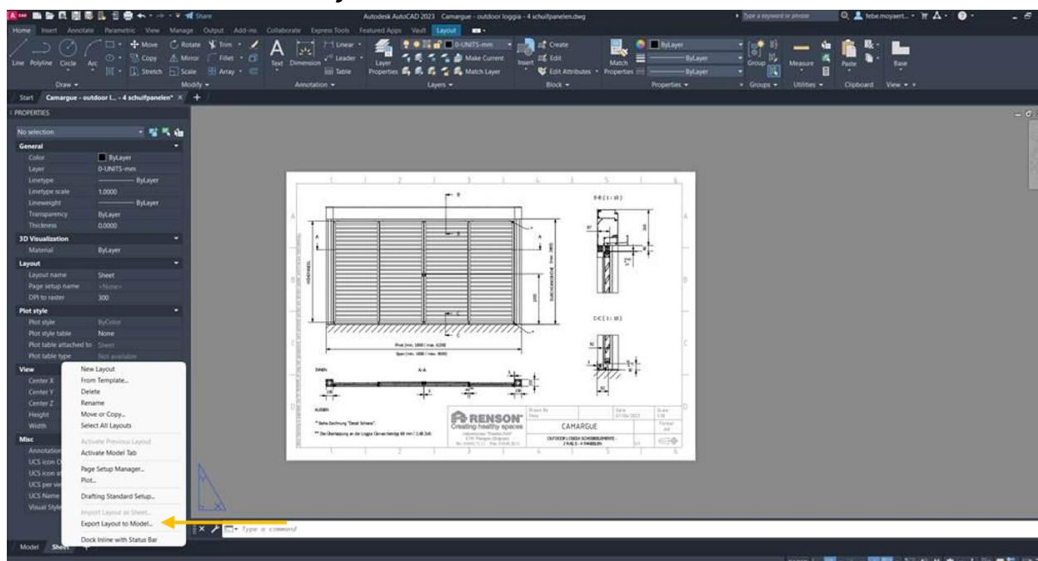
What is important from the PDF:

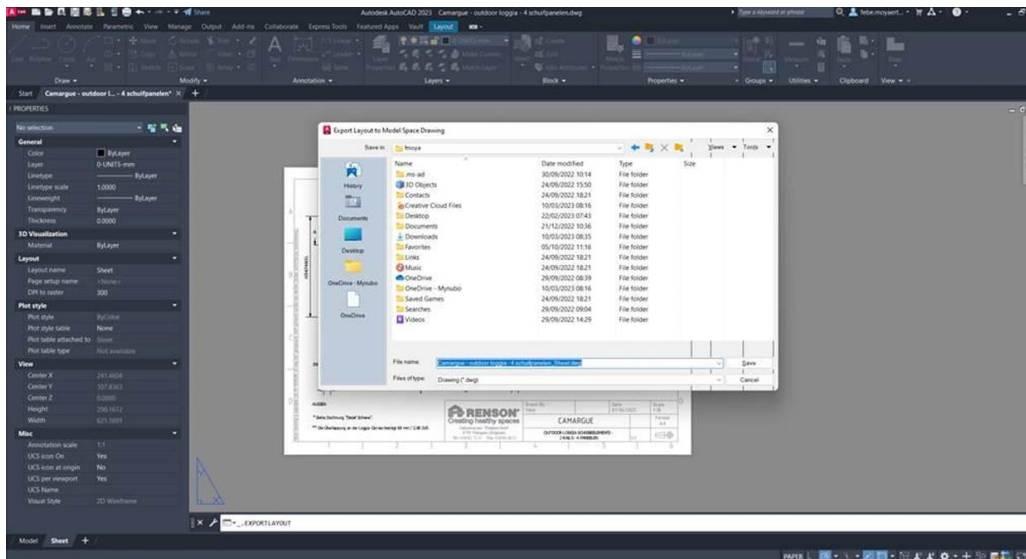
AutoCAD

A. Go to the sheet tab and right click the tab.

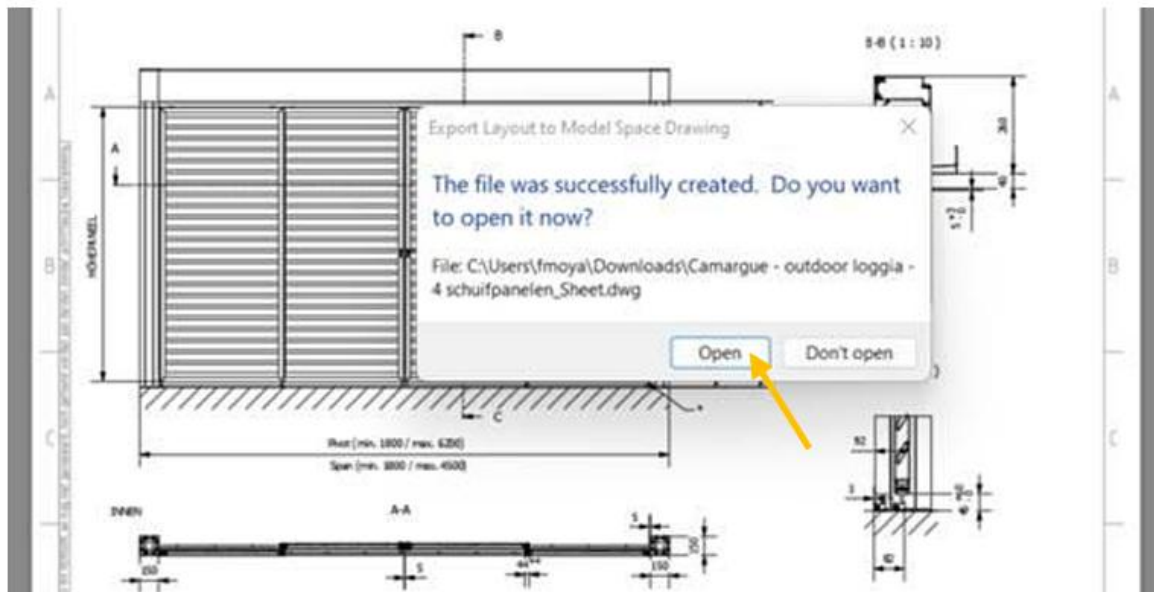


B. A menu will appear, click on 'export layout to model'.
The software will ask you to save it as a new document.

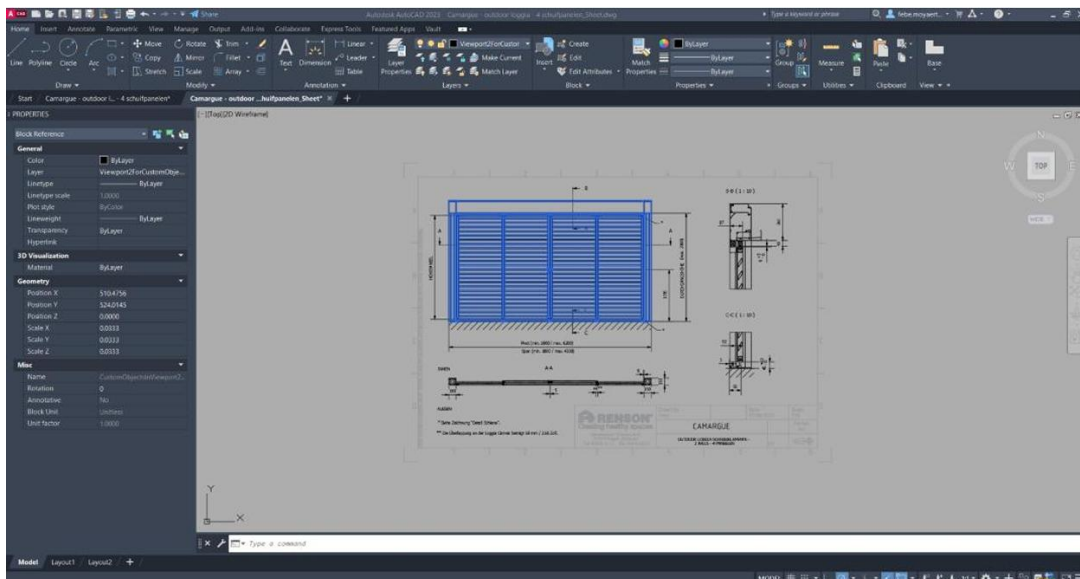
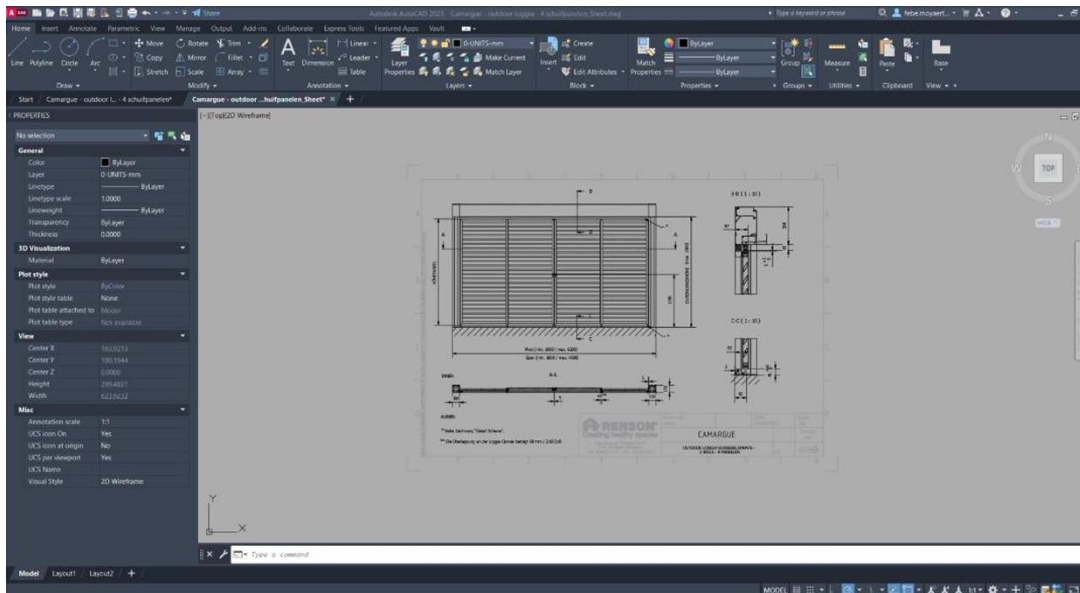




- C. Once the new file is saved, the software will ask you to open this drawing. Click on 'open'.



- D. The new drawing will open and appear in the model tab.
You will be able to click on the model views and copy them.



[Back](#)

03.2026 – Product updates on RIO

Camargue Fixscreen

Starting today, the Camargue Fixscreen can be ordered in RIO with Tuffscreen up to 6 m free width.

Backorder Outdoor curtains

Curtains can be reordered in RIO starting from 24/04/2026.

Backorders standard blades

From 24/04/2026, it will also be possible to reorder standard slats for Algarve and Camargue straight tracks via RIO.

[Back](#)

03.2026 – Transport costs Service Outdoor

We would like to remind you that since January 2026, the same transport rates apply for paid Outdoor Service cases as for Sales.

[Back](#)

03.2026 - Hourly rate technicians

To continue guaranteeing our quality and keeping our service at the highest level, we have adjusted the hourly rate for our technicians. The new rate is **€65.00 per hour** instead of €56.50.

This adjustment helps us continue investing in well-trained technicians, modern tools, and a service you can rely on today and in the future.

[Back](#)

03.2026 – Why a service case?

As a technician, we prefer to solve a problem immediately. That is only possible when all parts are available.

With a **supplemented service case** or a **standard set of spare parts**, you avoid extra trips, rescheduling and lost time at your customer's site.



How does it work exactly?

Whenever you replace a part at a customer's site, you create a **service order/request** in RIO for the customer's project. The used part is automatically reordered and the history remains correct.

--> Is the original order still under warranty?

Then you receive a warranty part. As soon as we receive the defective part back, it will be credited.

--> Has the warranty expired?

Then you receive a paid part. The warranty on the new part starts from the invoice date.

This way, your administration and warranty tracking remain clear, and your service case stays fully stocked.

How long can a part remain in my car?

There is no problem. A part may remain in your service case for a longer time — it does **not** lose its warranty. The warranty only starts once the part is finally installed at the customer's site.

Order your service case easily via these article numbers in RIO:

Parts IO: 6357

Parts RTS: 261

Parts RTS USA: 263

[Back](#)

02.2026 - Colour range: modification of Tiger powders

Tiger has transferred a number of matt powders from **TIGER Drylac Series 29** to the new **TIGER Drylac FlexCURE Series 18**. The Series 18 products **are fully compatible** with Series 29; **colour, gloss and technical properties remain unchanged**.

For the powders that are being transferred to Series 18, the **powder codes** in our internal systems and in the RIO platform will change. **Only the last five digits of the code will remain the same.**

The list below provides an overview of the old Series 29 codes and the corresponding new Series 18 codes, so that you can easily compare them and process them in your systems.

The changes will take effect from 2 March 2026..

[List of powder codes](#)

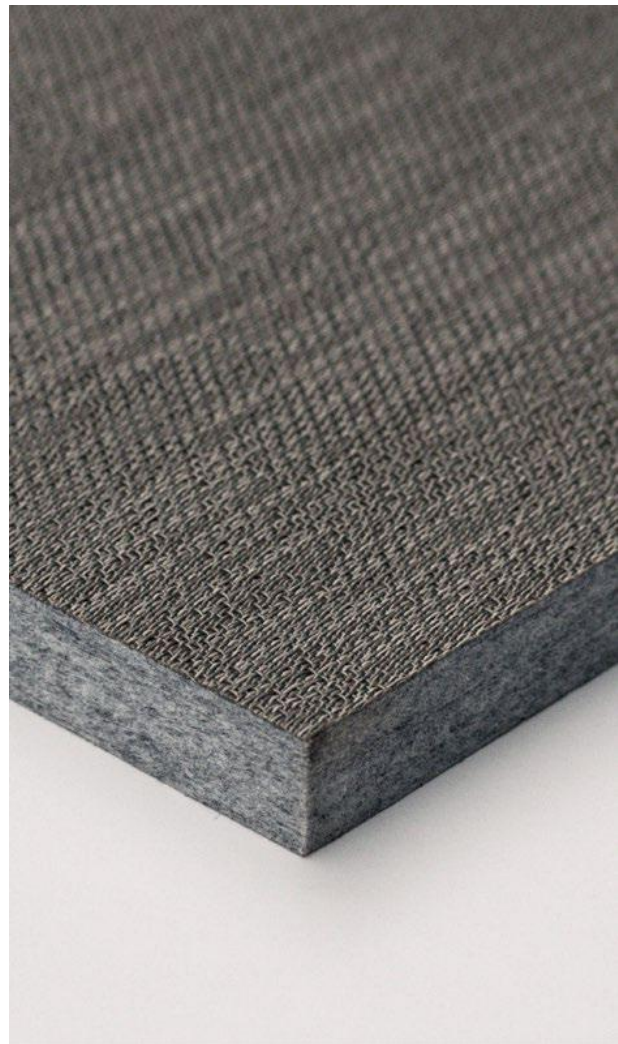
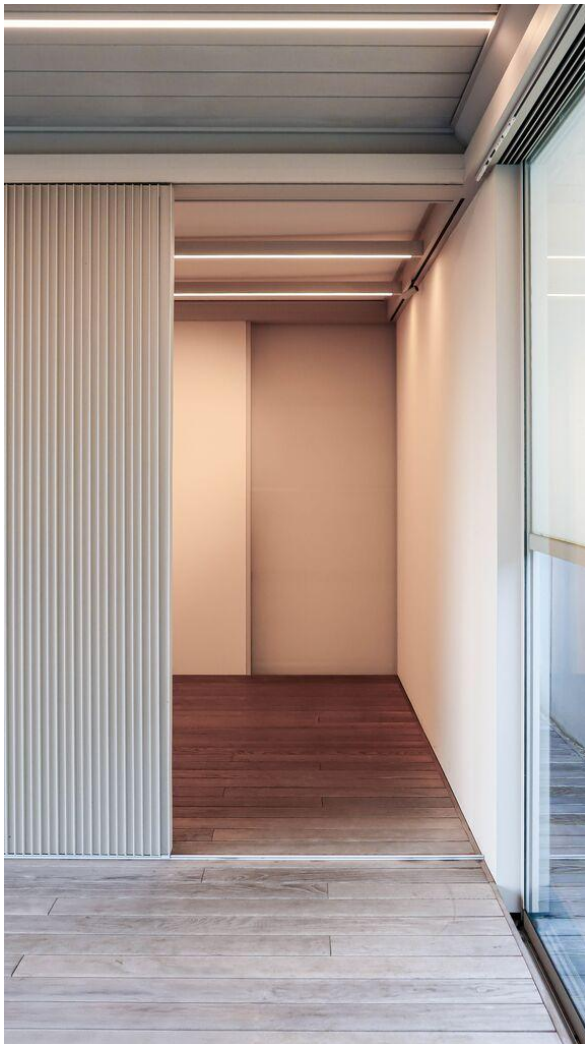
[Back](#)

02.2026 - New - CosySound panels

Good news! We are expanding our range with new acoustic panels that perfectly combine aesthetics and functionality.

Together with our NOA partners **PETAC** and **2TEC2**, we have created panels that cleverly combine design and comfort. They ensure soft, pleasant acoustics in your outdoor space and give your project a premium look.

These acoustic panels are one of the **additional products** we offer through external partners. They give you extra freedom to finish your project with more atmosphere, colour and high-quality materials.



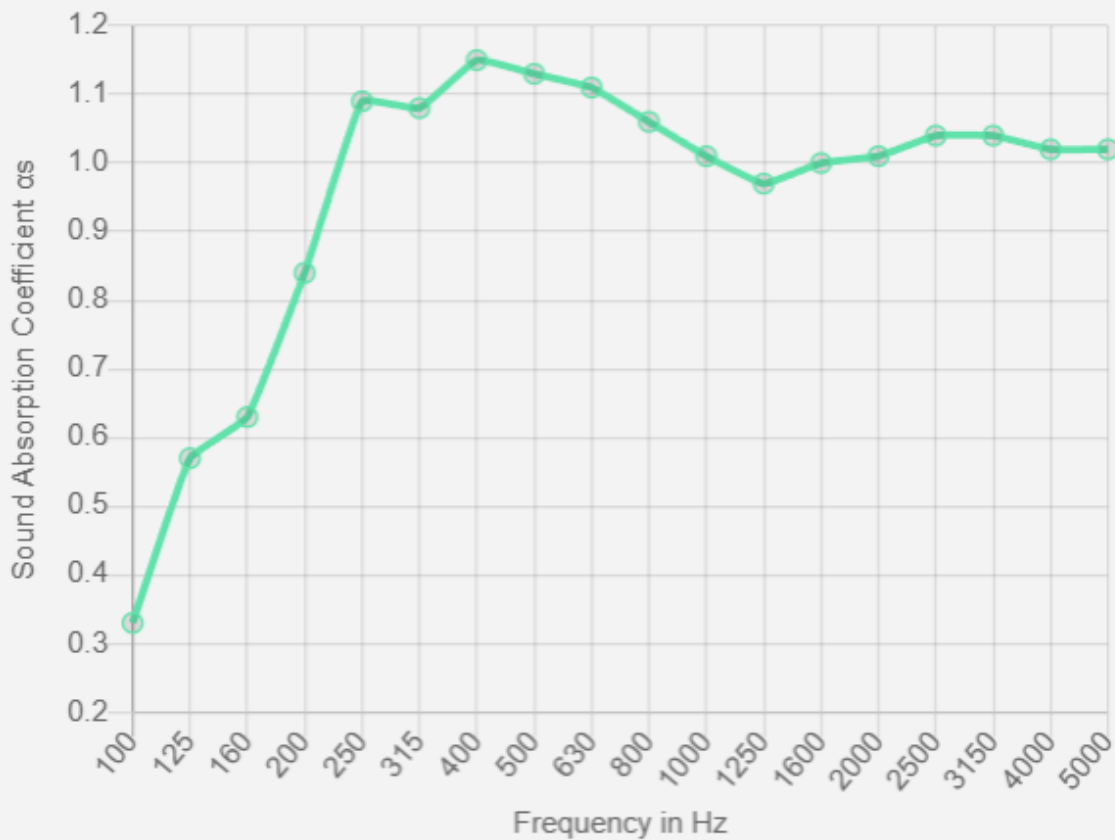
What is important from the PDF:

What makes these panels unique?

- Sustainable PETAC core
- Made from recycled PET fibres
- Thickness: 24 mm
- Colour: Silver (grey)
- Weight: 3000 g/m²
- Sound absorption coefficient (see image)

Sound Absorption Coefficient in function of frequency

PETAC® 24mm 3000g/m² - on frame of 50mm / 100mm (pressed together to 50 mm) insulation (polyesterwool) - α_w -value of 1,00



➤ Exclusive 2TEC2 finish

Laminated 2TEC2 fabric available in three finishes. These colours were previously showcased in our Amani in the showroom and during Salone del Mobile 2025.



Deep Wood



Delicate Beige



Antique Bronze

Dimensions and packaging

- Standard format: 590 mm x 2750 mm
- Delivered per set of 2 pieces
- No custom sizing available
- Other 2TEC2 colours are not available

Ordering via RIO

Search for “CosySound panels” or use these article numbers:

- CosySound panelen – Deep Wood – art. 36827
- CosySound panelen – Antique Bronze – art. 37053
- CosySound panelen – Delicate Beige – art. 37052

All products offered through external parties are subject to a **separate price and discount structure**. The discount for these panels is **10%**. We deliberately offer these products through RIO so that you can easily combine everything **in one order and one delivery**. This keeps things clear and creates space for us to offer even more additional options in the same way in the future.

Watch the video with the processing instructions via [this link](#)

[Back](#)

01.2026 - Change in standard colours

From 2026, we will be updating our standard colours. As a result, **two Shop-in-Shop colours will be removed from the standard colour group:**

- AE30017702420 - RAL 7024 - GRAPHITE GREY Polyester Architectural AE
- AE70018720125 - RAL 8014 - SEPIA BROWN Polyester Architectural AE

Both the **colour guide** and **RIO** will be updated shortly. As always, you can easily find them on our Professional Portal. We kindly ask you to take this change into account when placing future orders.

[Back](#)

01.2026 – New: Algarve power socket

Good news! From now on, you can also install a **power socket** in the **Algarve**. Until now, this feature was only available for Amani and Camargue, but that is about to change!

A handy upgrade for those who want to add extra comfort and ease of use.

More info via [this link](#).



[Back](#)

01.2026 – Outdoor Curtains

In our December newsletter, we announced that the Outdoor curtains would be available for backorder starting in January. Due to some technical challenges, the launch has unfortunately not yet taken place, but we are working on it and will keep you updated as soon as a new date is confirmed.

[Back](#)

01.2026 - Simplified returns process

Since January 2025, you no longer need to send returns yourself. Until now, our service department always requested sizes, weights and contact details to book your return with DHL. Feedback showed us that this caused extra administration and delays — something we naturally want to avoid.

That is why we are switching to **one standard return address and fixed return details**. To ensure everything is processed correctly, we kindly request that you complete the form via [this link](#).

This will enable us to streamline the returns process considerably — for both you and us. The current returns policy remains unchanged:

What is important from the PDF:

Renson Service Return Policy

At Renson, we may ask customers to return certain defective parts for further analysis or additional processing. This analysis allows us to determine warranty eligibility accurately and decide whether a credit note will be issued or a replacement part will be provided.

To facilitate this process, we will send you a return label, which must be clearly affixed to the outside of the package containing the material being returned. The package should be properly packaged for safe transit. This return label is essential for the process to run smoothly.

Please note the following:

- **No credit note will be issued for goods that are not returned correctly.**
- **No credit note will be issued for goods returned in error, without a return label, or with an incorrect return label.**

Steps to complete a return:

1. Initiate the return process:
 - Renson will create a return label and initiate the return process via DHL.
 - The customer must attach the return label to the outside of the package and book a pickup time using the link provided via email.
 - For detailed instructions on using the DHL link, [click here](#)

2. Return the defective goods:

- Defective goods can be returned free of charge within their warranty period, as long as the DHL link is used within **89 days**.
- If the pickup is not arranged within 89 days using the provided link, the customer will need to arrange the return at **their own expense**.

3. Return period:

- Returns will be accepted up to a **maximum of 9 months** from the date the return label is created.

4. Warranty conditions:

- If the defect is determined to be caused by customer error, external factors, or incorrect use, the warranty will no longer apply.
- If the returned goods are found to be in working order and not defective, no warranty coverage will be provided.

If you have any questions about this process, please contact us for assistance.

[Back](#)

NEWSLETTERS 2025

12.2025 – Update on glass sliding panels

Since the launch, we have continuously improved our glass sliding walls – thanks in part to your valuable feedback, for which we are very grateful! From January onwards, we will be able to offer a complete **one-stop-shop** alternative that can easily compete with rival solutions.

What can you expect?

- **Perfect alignment:** each panel comes standard with a handy system for easy vertical alignment.
- **Smart locking:** multiple sliding doors in one canopy? From now on, you can lock all handles with cylinder locks using one and the same key.
- **Additional glass option:** in addition to transparent and frosted glass, we are also introducing a stylish smoked version from January onwards.
- **Price reduction:** more quality for less: we are reducing the price per panel, thereby strengthening our market position and giving you every opportunity to use Renson for your glass wall too Renson for your glass wall too!

Our Product Managers explain everything in detail in the short [video](#) below (10 min.). Click on the link and discover how we can make your outdoor projects even more stylish and user-friendly

Product information

Our glass sliding doors meet the quality criteria set out in European standard EN 1279-1:2018.

For all technical details such as the technical data sheet, installation manual, price list, etc., please refer to the **Professional Portal**, where you can easily consult all updated documents.

We also have a short video showing the new [vertical alignment](#) in action – a handy tool that demonstrates how easy this system is to use.

[Back](#)

12.2025 – Outdoor Curtains – Back-orders

Good news! From 1st January 2026, you will also be able to easily place reorders for outdoor blinds in RIO:

Buitengordijnen

[Bekijk details](#)

CONFIGUREER

Rideaux extérieurs

[Voir les détails](#)

CONFIGURER

Outdoor Curtains

[View details](#)

CONFIGURE

Outdoor Vorhänge

[Details anzeigen](#)

KONFIGURIEREN

[Back](#)

12.2025 – Dimmable RTS heating receiver

Important: Supplier Somfy has recently removed the dimmable RTS heating receiver from its product range! As a result, the following guidelines now apply in RIO:

- Countries where Somfy io is legally permitted:
For configurations with Lineo Heat or Heat Beam and a desired heating receiver, automation is only possible via Somfy io. In that case, a dimmable Somfy io heating receiver is automatically provided. Does the configuration not include a heating receiver? Then the choice between Somfy RTS and Somfy io remains possible.



- Countries where only Somfy RTS is legally permitted:
For configurations with Lineo Heat or Heat Beam and a desired heating receiver, we still provide a dimmable RTS heating receiver. We still have a limited stock of these and use them specifically for countries where RTS is mandatory.

[Back](#)

12.2025 - 'Winter is coming'

Winter is just around the corner, which means it's time to make your patio cover winter-proof. With a few simple precautions, you can prevent damage and extend the life of your installation:

- **Frost:** Do not close the slats completely! If the slats freeze together, damage may occur during operation.
- **Snow:** In heavy snowfall, place the slats of the roof in a vertical position to avoid overloading the roof.
- **Fixscreen:** Roll up the screens so that they do not get damaged or dirty.
- **Sliding glass panels or Loggia:** Open the side panels so that the canopy remains as open as possible. This prevents both the panels and the canopy from catching too much wind.

Do you have any questions? Feel free to call us, we are happy to give you personal advice!

[Back](#)

11.2025 - Discontinuation: Axalta AE03107070320

From **14 November 2025**, Axalta powder **AE03107070320** is **no longer be available** in the **RIO Outdoor catalogue**. We have determined that this powder causes “clouding”, resulting in a finish that does not meet the desired quality standards.



Alternative: Tiger 067/80045

As an alternative, we offer the **Tiger powder 067/80045 (DB703)** as standard. This powder has a similar colour with only a minimal visual difference and provides a more attractive, consistent finish thanks to its QualiCoat Class 2 properties.



Practical information:

- In **RIO**, you will no longer be able to select the old Axalta powder during your Outdoor configuration. When selecting this powder code, a warning will appear with a reference to the new Tiger variant 067/80045 - TIGER DB703.
- This Tiger variant is currently a non-standard powder, but will of course be used for your Outdoor configurations at **no extra cost**. From 1 January 2026, this will officially become a standard powder.
- Given the minimal visual colour difference, the **SNS** and **TOP20 samples** will continue to be based on the old powder for the time being, but will also be adjusted in the future.

[Back](#)


10.2025 - Camargue & Algarve Demo Cases

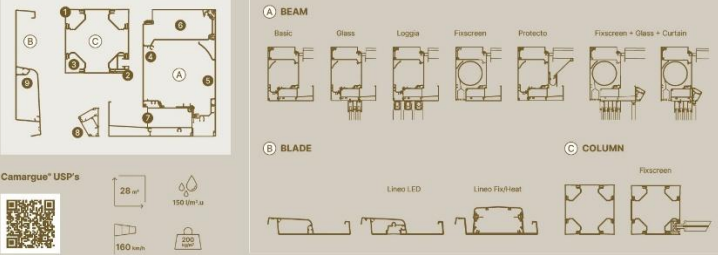
The **demo cases** for our **Camargue** and **Algarve** models are now available with an updated look and feel. This update gives them a modern and professional appearance, in line with our current branding and presentation. Important to note: the contents of the cases remain unchanged, so even if you already have an existing case, you will still be perfectly equipped.



Would you like to receive the new version?

Simply order it now in the usual way on RIO.

Camargue®





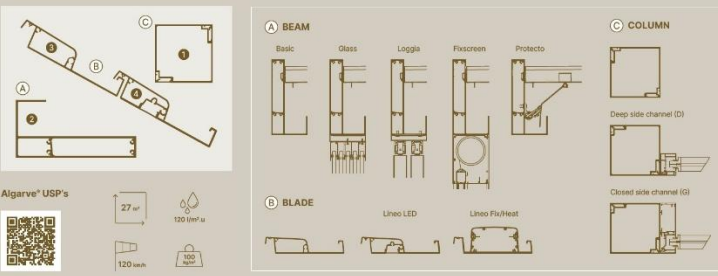
Camargue® USP's

28 m² | 150 l/m².u
160 kWh | 100 kWh

EN: 1. Ducting system profile (screens) / 2. Corner finishing profile / 3. Colonne LED / 4. Roof edge profile / 5. Side cover / 6. Top cover / 7. Water drainage gutter / 8. UpDown LED / 9. Blade
NL: 1. Omsluitingsprofiel (screens) / 2. Hoekafwerkingsprofiel / 3. Colonne LED / 4. Dakrandprofiel / 5. Afdekcap zijkant / 6. Afdekcap bovenkant / 7. Watergoot / 8. UpDown LED / 9. Lamel
FR: 1. Coulisser latérales (screens) / 2. Profilé de finition d'angle / 3. Colonne LED / 4. Profil de bord de toiture / 5. Profil de recouvrement latéral / 6. Profil de recouvrement supérieur / 7. Gouttière / 8. UpDown LED / 9. Lame
DE: 1. Führungprofil (Screens) / 2. Eckabschlussprofil / 3. Colonne LED / 4. Dachrandprofil / 5. Abdeckkappe Seite / 6. Abdeckkappe Oberseite / 7. Wasserabfuhrtrinne / 8. UpDown LED / 9. Lamelle
ES: 1. Perfil del sistema de guía (screens) / 2. Perfil de acabado de las esquinas / 3. Colonne LED / 4. Perfil del borde del techo / 5. Tapa lateral / 6. Tapa superior / 7. Canal de agua / 8. UpDown LED / 9. Lama
IT: 1. Profilo del sistema di guida (screens) / 2. Profilo di finitura angolare / 3. Colonna LED / 4. Profilo del bordo del tetto / 5. Copertura laterale / 6. Copertura superiore / 7. Canale di scolo / 8. LED UpDown / 9. Lama

Camargue demo case – Order number: 2002072

Algarve®




Algarve® USP's

27 m² | 130 l/m².u
120 kWh | 100 kWh

EN: 1. Column with invisible screws / 2. Span-Pivot beam with integrated water gutter / 3. Blade / 4. Lineo LED
NL: 1. Kolom met onzichtbare schroeven / 2. Span-Pivot balk met geïntegreerde watergoot / 3. Lamel / 4. Lineo LED
FR: 1. Colonne avec des vis invisibles / 2. Poutre Span-Pivot avec gouttière intégrée / 3. Lame / 4. Lineo LED
DE: 1. Pfosten mit unsichtbar verbauten Schrauben / 2. Span-Pivot-Träger mit integrierter Wasserabfuhrtrinne / 3. Lamelle / 4. Lineo LED
ES: 1. Columna con tornillos invisibles / 2. Perfiles Span-Pivot con canalización de agua integrada / 3. Lama / 4. Lineo LED
IT: 1. Colonna con viti invisibili / 2. Trave Span-Pivot con grondaia integrata / 3. Lama / 4. Lineo LED

Algarve demo case – Order number: 2002073

[Back](#)

09.2025 - New product videos available now

We've created new videos for Camargue, Algarve, Aero and Carport, showcasing the unique strengths of each product in a clear and visually appealing way.

These [USP videos](#) are perfect for use in your communication - both online and in your showroom.

[Back](#)

09.2025 - Product updates Aero & Algarve

We are delighted to inform you about some important product updates within our Outdoor product range. In this newsletter, you will discover:

- Updates to the **Aero & Algarve**, with improvements that enhance both design and functionality.

All the necessary information about these innovations is clearly summarised below. This will ensure that you are fully informed and ready to provide your customers with the best possible advice.

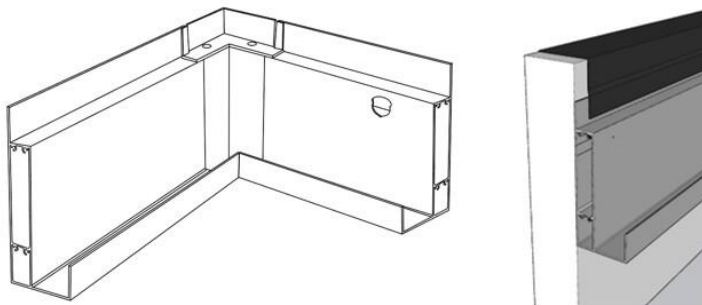
We are pleased to announce that these updates will also be applied to all new Aero orders **from 24 October** onwards.

[Webinar](#)

KEY UPDATES AT A GLANCE:

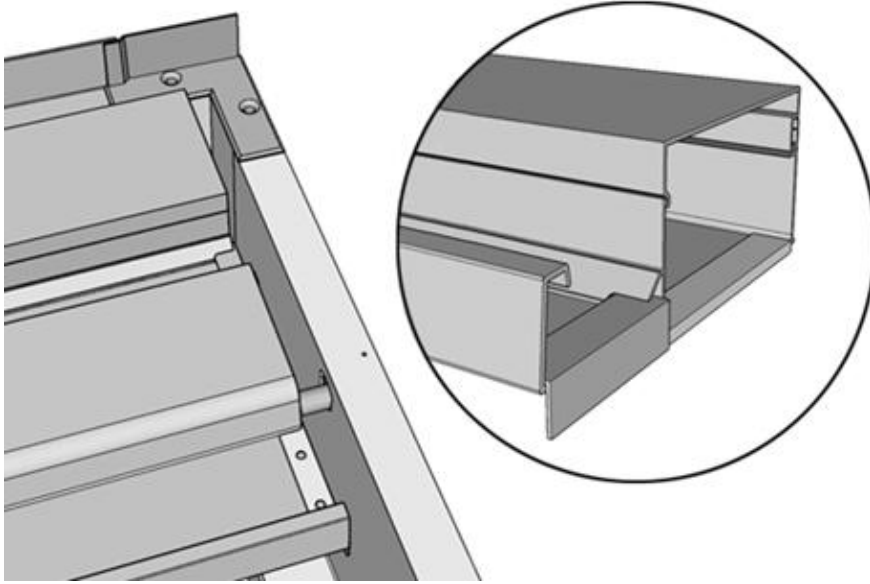
Customised profile with extra lip

When integrating an Aero, an optional **customised base profile with an extra lip** is available. This extra lip serves as a wall connection profile and significantly simplifies the watertight connection between the Aero and the surrounding structure. This makes a separate seal completely unnecessary, even under the motor.



Shorter fixed blade and finishing blade

The **fixed blades and finishing blade** are now **shortened** to the same length as the standard blades and are equipped with a drip nose, according to the Camargue principle. This prevents water from remaining in the fixed blades, ensuring better drainage and a more sustainable solution.



[Back](#)

08.2025 - Update powder colour codes

IGP Powders

Supplier IGP is replacing all powders starting with powder code '58' with a 98-99% identical powder that will start with powder code '56'. Powder codes starting with '58' will remain available while stocks last. After that, the switch to the new '56' powder codes will take place. Unless used side by side, an untrained eye will not be able to see any difference at all.

Tiger Powders

Powder manufacturer TIGER is replacing

- all powders from their 'Drylac® Series 68 fine structure' by the new 'Drylac® Series 67 Flexcure fine structure'.
- all powders from 'Drylac® Series 29 mat' by the new 'Drylac® Series 18 Flexcure mat'.

Therefore, powder codes beginning with '068' will be changed to '067' and those beginning with '029' will be changed to '018' on RIO.

This change has some consequences for the powder coating process, but does not influence colour, structure or gloss, and it neither makes any difference in terms of natural weathering.

Important note: Powder code 029/72362 is no longer available.

List of involved A-powders:

Old powder code	Description	Renson powder category	New powder code
068/10079	Fine texture traffic white	A2T	067/10079
068/10259	RAL 9010 fine texture	A2T	067/10259
068/70190	Anthracite grey fine texture	A2T	067/70190
068/71291	RAL 7039 matt fine texture	A3T	067/71291
068/71752	RAL 8019 TC fine structure matt	A2T	067/71752
068/71764	RAL 7021 TC fine texture matt	A2T	067/71764
068/80057	RAL 9004 fine texture matt	A2T	067/80057
068/80296	Ral 9011 fine texture matt	A2T	067/80296
068/80381	9005TC Carbon 01 fine structure matt	A2T	067/80381
029/73570	Tiger RAL7016 matt	A2MG	018/73570

[Back](#)

06.2025 - Updates glass sliding panels

During the Ambassador Days in February, we introduced you to the latest developments for our glass sliding panels. And now the time has come: from 1 July, we will add 2 new options to the RIO configuration! These innovative upgrades provide even more flexibility and ease of use.

What is important from the PDF:

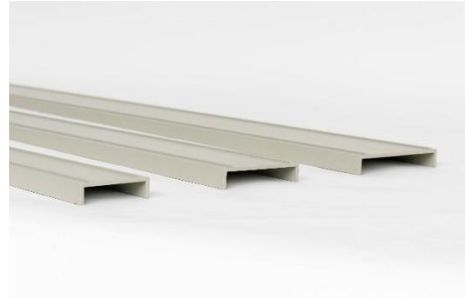
Handle with cylinder lock

- Ergonomic locking of sliding glass wall: the lock is integrated into the handle, allowing the panel to be locked at hand height.
- The handle is made of cast aluminum and painted to match the colour of the canopy.
- Includes a built-in cylinder lock with three security pins, lockable from both the inside and outside. Each lock comes with three keys.
- For a single sliding glass panel, a recess in the glass ensures a clean close against the side profile. The locking plate can be easily installed in the profile and adjusted to the correct height.
- For double sliding glass walls, one panel features a handle with a cylinder lock, and the other has a handle with a locking plate. By default, the handle with the cylinder lock is mounted on the right panel (as seen from the outside). This setup can be reversed on site if preferred.
- When selecting this locking handle, bottom locking in the glass profile is not available.

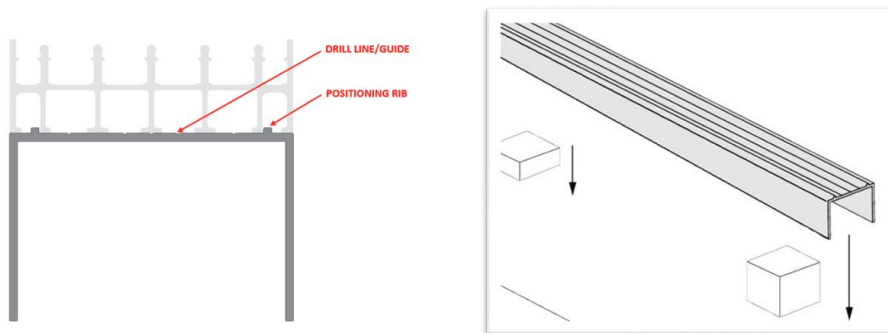


Slope profile

- Aluminum extrusion profile, powder-coated in the same colour as the canopy.



- The slope profile allows for level horizontal installation of the bottom rail of the sliding glass wall on a sloped terrace.
- The U-shaped profile features raised ribs for easy positioning of the bottom rail profiles. Extruded marking lines indicate where to drill. The profile must be supported at the fastening points using shims. Fixing materials are not included and should be selected based on the substrate type.



- Available in three widths, 66 mm - 86 mm - 106 mm and corresponding to bottom rails with 3, 4, or 5 tracks. Maximum profile length is 6 meters.
- You enter the exact slope to accommodate in RIO (up to a maximum of 60 mm), and we mill the profile accordingly. If a slope profile is selected, the height of the glass wall equals the headroom minus 5 mm.

More details are available in the price list, product sheet, technical drawings, and installation manual— all of which have been updated with the latest features and are accessible on the Professional Portal. Always refer to the most recent version online. Be sure to also review the help texts in RIO during configuration or ordering.

[Back](#)

06.2025 - Loggia Privacy: adjustable damper

The adjustable damper for Loggia Privacy was also enthusiastically received at Ambassador Days. The knobless control to manually infinitely rotate the slats is therefore updated.

What is new? For orders from 1 July, the internal damper, which ensures the right resistance, can be easily adjusted with an Allen key. The screws for this are discreetly concealed on the inside of the frame, both at the bottom and at the top. This allows you and the end customer to determine the desired resistance, and the customer can tighten or loosen the slats over time if necessary.



[Back](#)

06.2025 - Update user manual Outdoor Loggia

In order to clarify the correct operation of our Outdoor Loggia panels, we have added QR codes to the Amani, Camargue and Algarve user manuals referring to short, clear videos. So be sure to always consult the latest versions on the Professional Portal.

What will you find in the videos?

- Correct operation of the position lock - [video](#)
- Sliding the privacy panels - [video](#)
- Opening & closing the privacy blades using the button - [video](#)

Be sure to go through these instructions with the end user to ensure smooth and correct operation of the Loggia panels.

[Back](#)

06.2025 - Indoor colour guide: Powder code SA021E (former AE80019164421)

Because of an error in our data, a wrong number (AE80019164421), was linked to our A2MG powder **SA021E** (Interpon D1036 - HOLLANDS WIT 9010 - Smooth Gloss).

So, in all orders where AE80019164421 was asked till now, we delivered the (similar) powder SA021E.

UPDATES:

- The powder code AE80019164421 was changed into SA021E, as well in RIO as in our online colour guides.
- There will be no change of delivered colour. Only the code is corrected.
- Code AE80019164421 is no longer available in RIO.

Indoor color guide: Replacement powder codes 068

Powder producing company TIGER is replacing all powders from their 'Drylac® Series 68 fine structure' by the new 'Drylac® Series 67 Flexcure fine structure'. This change has some consequences for the powder coating process, but **does not influence colour, structure or gloss**, and it neither makes any difference in terms of natural weathering.

Powder codes starting with '068' will start with '067' on RIO from 07/07/2025.

List of involved A-powders:

Old powder code	Description	Renson powder category	New powder code
068/10079	Fine texture Traffic White	A2T	067/10079
068/10259	RAL 9010 Fine texture	A2T	067/10259
068/70190	Anthracite grey fine texture	A2T	067/70190
068/71291	RAL 7039 Matt Fine Texture	A3T	067/71291
068/71752	RAL 8019 TC Fine structure matt	A2T	067/71752
068/71764	RAL 7021 TC fine texture matt	A2T	067/71764
068/80057	RAL 9004 Fine texture Matt	A2T	067/80057
068/80296	RAL 9011 Fine texture Matt	A2T	067/80296
068/80381	9005TC Carbon 01 fine structure matt	A2T	067/80381

[Back](#)

05.2025 - Shop-In-Shop: wrong colour sample RAL 8014

Structural paint RAL 8014 versus Sepia Brown

In last October's monthly update, we already mentioned that the powder belonging to the RAL plate labelled 'RAL8014' (the STR version) does not technically follow RAL color standards. Hence, the name in the color guide was changed to Sepia Brown.

	RAL 8014	Fine Texture RAL 8014 Polyester Architectural AE
	n/a	<u>Sepia Brown Fine texture Metallic</u>

Friendly reminder: please double check your Shop-In-Shop color swatches and module! If these color plates still state 'RAL 8014', we recommend that you immediately change the designation on the RAL plate to 'Sepia Brown', or order new color swatches Sepia Brown (powder code 029/60740) from RIO, which show the new designation. This way, deliveries with the wrong color can be avoided.



RAL 8014
Fine Texture RAL 8014
Polyester Architectural AE
Axalta AE03058801420



Sepia Brown
Sepia Brown
Fine texture Metallic
Tiger 029/60740

[Back](#)

04.2025 - Color Guide

Twenty-seven new powders were added to the A powder series. These powders are now in stock and surcharges have been reduced to apply the powders.

Most of the powders are Qualicoat Class 2 powders and have superior UV resistance, the best quality and no extra cost.

Powder Code	Internal Renson Colour Code	Description	Powder supplier	Powdergroup since 09/04/2025
AE13008107227	STR 0302	Fine texture Taupe Matt Polyester Architectural AE	Axalta	A3T
AE03001139627	STR 0291	Fine texture Hornschuh F436-6039 Yellow Polyester Architectural AE	Axalta	A3T
AE03007394827	STR 0390	Fine texture EF 154-0533 Grey Polyester Architectural AE	Axalta	A3T
SD0300C1210827	STR 0782	Fine Texture WTM BEIGE Superdurable Architectural SD	Axalta	A3T
YN304F	STR 0809	RAL 9004 HR - Fine textured	AkzoNobel	A2T
YN305F	STR 0284	RAL 9005 Matt Fine Texture	AkzoNobel	A3T
YN311F	STR 0810	RAL 9011 HR - Fine textured	AkzoNobel	A2T
YL321F	STR 0503	RAL 7021 Matt HR Fine Texture	AkzoNobel	A2T
SD300C7701620	V9001116	Superdurable Architectural SD Matt RAL 7016 ANTHRACITE GREY	Axalta	A2MG
SD300C7702120	V9001524	Superdurable Architectural SD Matt RAL 7021 BLACK GREY	Axalta	A3MG
SD300C7700620	V9002385	Superdurable Architectural SD Matt RAL 7006 BEIGE GREY	Axalta	A2MG
SD300C7702220	V9001825	Superdurable Architectural SD Matt RAL 7022 UMBRA GREY	Axalta	A3MG
SD300C7703520	V9001586	Superdurable Architectural SD Matt RAL 7035 LIGHT GREY	Axalta	A3MG
SD300C8801420	V9002386	Superdurable Architectural SD Matt RAL 8014 SEPIA BROWN	Axalta	A2MG
SD300C9901620	V9000959	Superdurable Architectural SD Matt RAL 9016 TRAFFIC WHITE	Axalta	A2MG
SD301C7900621	V9002384	Superdurable Architectural SD Matt CONCRETE TOUCH "9006"	Axalta	A3MG
SD301C7900721	V9001753	Superdurable Architectural SD Matt RAL 9007 GREY ALUMINIUM	Axalta	A3MG
SD700C4900520	V9002124	Superdurable Architectural SD Semi Gloss RAL 9005 JET BLACK	Axalta	A2MG
SD700C7703820	V9002390	RAL 7038 Satin gloss	Axalta	A2MG
SD700C7703020	V9002392	RAL 7030 Satin gloss	Axalta	A2MG
SD700C7703920	V9002389	Superdurable Architectural SD Semi Gloss RAL 7039 QUARTZ GREY	Axalta	A2MG
SD700C7701620	V9001622	Superdurable Architectural SD Semi Gloss RAL 7016 ANTHRACITE GREY	Axalta	A2MG
SD700C7702220	V9002388	Superdurable Architectural SD Semi Gloss RAL 7022 UMBRA GREY	Axalta	A2MG
SD700C7702120	V9001980	Superdurable Architectural SD Semi Gloss RAL 7021 BLACK GREY	Axalta	A2MG
SD700C9901620	V9001587	Superdurable Architectural SD Semi Gloss RAL 9016 TRAFFIC WHITE	Axalta	A2MG
SD700C7703520	V9002391	Superdurable Architectural SD Semi Gloss RAL 7035 LIGHT GREY	Axalta	A2MG
SD700C9901020	V9001823	Superdurable Architectural SD Semi Gloss RAL 9010 PURE WHITE	Axalta	A2MG

[Back](#)

02.2025 - Warranty Outdoor: new registration procedure


Good news! As of January 2025, the registration procedure for a patio cover warranty has been greatly simplified.

What's new?

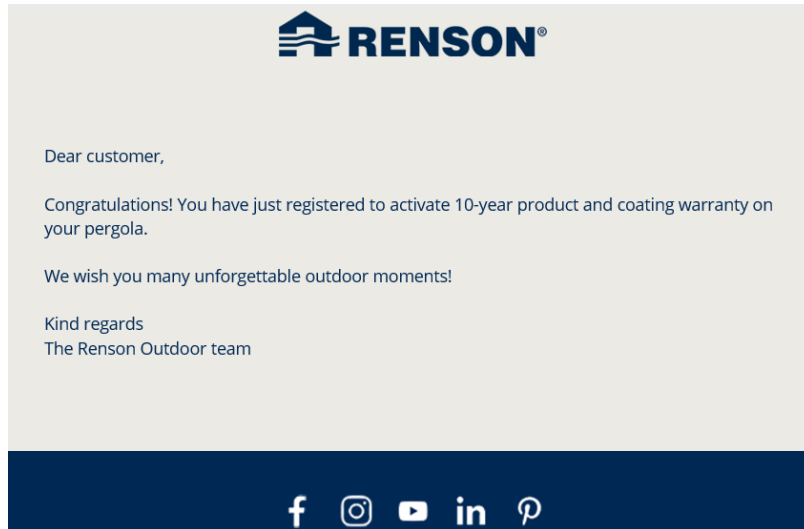
The end customer must still register his or her canopy via the online contact form on our website: <https://renson.net/qrcode/warranty>. An additional selection was added there to check whether it is a 2024 or 2025 terrace cover.

- *Orders of 2024:* here the old procedure is still active and you will receive a voucher code for a free Maintenance Set.
- *Orders from 2025:* no voucher code needed anymore! The Maintenance Set is automatically included with the patio cover during installation.

WARRANTY REGISTRATION

<input type="text" value="First name*"/>	<input type="text" value="Name*"/>
<input type="text" value="Postal code*"/>	<input type="text" value="Town/city*"/>
<input style="border-bottom: 1px solid #ccc;" type="text" value="Belgium"/>	<input type="text" value="Email address*"/>
	<small>We will use this e-mail address to confirm your registration</small>
When was the patio cover ordered?*	
<input checked="" type="radio"/> 2024	
<input type="radio"/> 2025	
<input type="text" value="Purchased via*"/>	<input type="text" value="Installation date*"/>
<input type="text" value="Warranty number*"/>	
<small>Size: 1234567890_001000</small>	
<input type="checkbox"/> I'm not a robot 	
<input type="button" value="Send"/>	

The end customer will also receive a confirmation email of this after successful registration.



[Back](#)

02.2025 - Algarve Fixscreen: backorders

In the first week of March we will expand our reorder configurators. From then on, you will also be able to easily configure the Algarve Fixscreen as a reorder in the RIO Outdoor catalog.



[Back](#)

02.2025 - Renson Service return policy

With some defective parts we ask you to return them so that we can carry out further analysis or additional processing on them. On this basis we can then determine the warranty correctly and decide whether a credit note can be issued or a new part can be delivered.

To enable a smooth processing of these returns, we ask you to please read the **Renson Service return policy** below thoroughly and follow it for any returns.

What is important from the PDF:

Renson Service Return Policy

At Renson, we may ask customers to return certain defective parts for further analysis or additional processing. This analysis allows us to determine warranty eligibility accurately and decide whether a credit note will be issued or a replacement part will be provided.

To facilitate this process, we will send you a return label, which must be clearly affixed to the outside of the package containing the material being returned. The package should be properly packaged for safe transit. This return label is essential for the process to run smoothly.

Please note the following:

- **No credit note will be issued for goods that are not returned correctly.**
- **No credit note will be issued for goods returned in error, without a return label, or with an incorrect return label.**

Steps to complete a return:

5. Initiate the return process:

- Renson will create a return label and initiate the return process via DHL.
- The customer must attach the return label to the outside of the package and book a pickup time using the link provided via email.
- For detailed instructions on using the DHL link, [click here](#)

6. Return the defective goods:

- Defective goods can be returned free of charge within their warranty period, as long as the DHL link is used within **89 days**.

- If the pickup is not arranged within 89 days using the provided link, the customer will need to arrange the return at **their own expense**.

7. Return period:

- Returns will be accepted up to a **maximum of 9 months** from the date the return label is created.

8. Warranty conditions:

- If the defect is determined to be caused by customer error, external factors, or incorrect use, the warranty will no longer apply.
- If the returned goods are found to be in working order and not defective, no warranty coverage will be provided.

If you have any questions about this process, please contact us for assistance.

[Back](#)

01.2025 - Color guide 2025

[New color guide 2025 online!](#)

The following powders were added to the group of A powders. This expands the group of A powders to 292 powders.

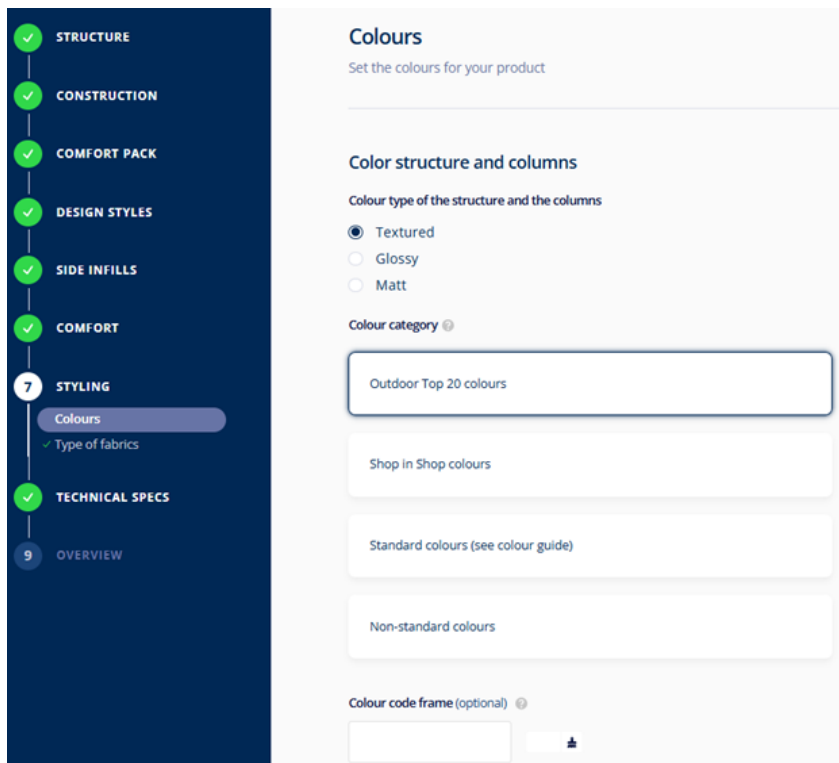
RAL 1002	AE70011960525	AXALTA RAL1002 SEMI GLOSS	GLOSSY
RAL 5015	AE70015400225	AXALTA RAL5015 SEMI GLOSS	GLOSSY
RAL 5001	AE70015820125	AXALTA RAL5001 SEMI GLOSS	GLOSSY
RAL 6012	AE70016870225	AXALTA RAL6012 SEMI GLOSS	GLOSSY
RAL 7003	AE70017520125	AXALTA RAL7003 SEMI GLOSS	GLOSSY
RAL 8011	AE70018510125	AXALTA RAL8011 SEMI GLOSS	GLOSSY
V9001557	AE70011102020	AXALTA RAL1020 SEMI GLOSS	GLOSSY
V9001559	AE70013300720	AXALTA RAL3007 SEMI GLOSS	GLOSSY
RAL 5008	AE70017830125	AXALTA - RAL5008 SATIN	GLOSSY
RAL 6021	AE70016170725	AXALTA - RAL6021 SATIN	GLOSSY
V9001672	SLJ09G	AKZO INTERPON D1036 RAL7009	GLOSSY
V9001733	AE70018800020	AXALTA RAL8000 SEMI GLOSS	GLOSSY
RAL 3005	AE70013860325	AXALTA RAL3005 SEMI GLOSS	GLOSSY
RAL 9017	AE70014900725	AXALTA RAL9017 GLOSSY TRAFFIC BLACK	GLOSSY
RAL 6028	AE70016720325	AXALTA RAL6028 SEMI GLOSS	GLOSSY
RAL 7046	AE70017370125	AXALTA RAL7046 SEMI GLOSS	GLOSSY
RAL 8001	AE70018120225	AXALTA RAL8001 SEMI GLOSS	GLOSSY
RAL 8004	AE70018210125	AXALTA RAL8004 SEMI GLOSS	GLOSSY
RAL 3004	AE70013720125	AXALTA RAL3004 SATIN	GLOSSY
V9001862	AE70013301620	AXALTA RAL3016 CORAL RED	GLOSSY

Color Selection RIO Outdoor Catalog

In order to order the desired color in Outdoor orders smoothly and correctly on RIO, the color selection was divided into 4 categories:

- Outdoor Top 20 colors: these are all color swatches from the Outdoor Top 20 swatch range
- Shop in Shop colors: these are all the color swatches from the Shop in Shop module
- Standard colors: these are all the colors mentioned in the color guide
- Non-standard colors

If you have determined the color from the physical color swatches, choose the color swatch category in RIO to ensure the correct color.



Colours
Set the colours for your product

Color structure and columns
Colour type of the structure and the columns

Textured
 Glossy
 Matt

Colour category ⓘ

Outdoor Top 20 colours

Shop in Shop colours

Standard colours (see colour guide)

Non-standard colours

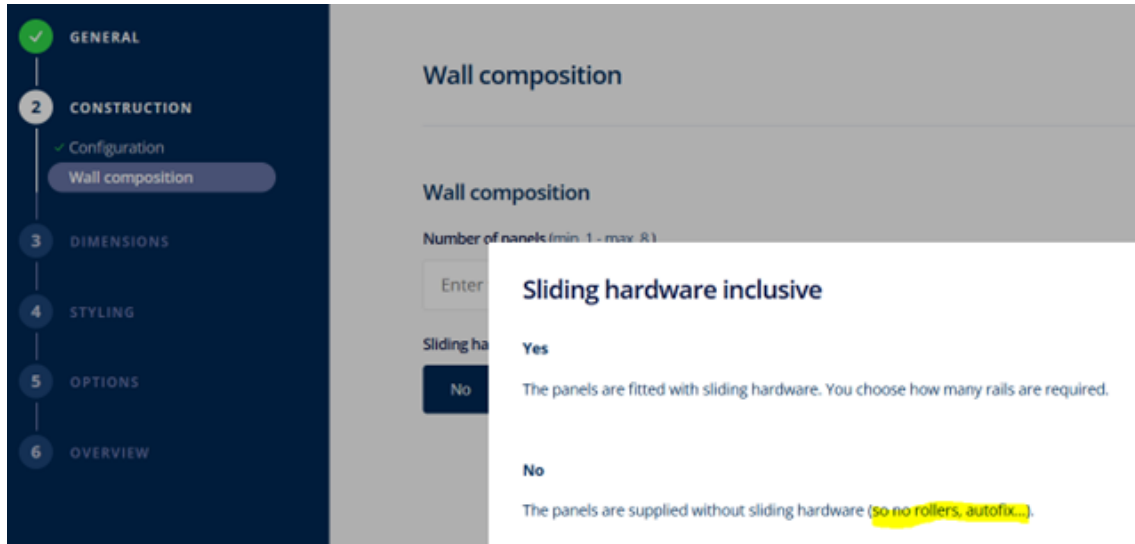
Colour code frame (optional) ⓘ

Furthermore, the designation approx. RAL xxxx (for paints that approximate a RAL color) was removed from the description, this to avoid wrong choices. The Outdoor color guide of 2025 has been updated and can always be downloaded via the **Professional Portal**.

[Back](#)

01.2025 - RIO help texts

We like to remind you again of the importance of the help texts on RIO, which can give more clarification about your configuration. For example, if you configure Outdoor Loggias to size and do not specify any sliding hardware, you will only order the panel (without sliding hardware). Then you will still have to provide all the sliding fittings (rails, roller systems, stoppers...) yourself. So always consult the question mark for the necessary additional explanations during your order.



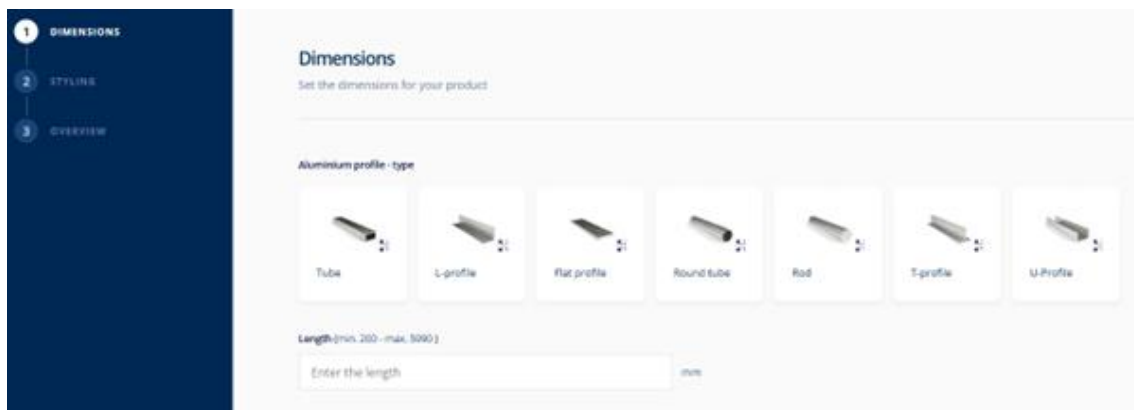
[Back](#)

01.2025 - Order separate profiles from price list

As of February 1st it will be possible to order standard profiles, as included in the Outdoor pricelist (p.53), on RIO. These profiles are immediately painted in the color of the canopy and delivered together. This allows you to finish your project quickly, easily and beautifully.

Standard aluminium profiles

CONFIGURE



The screenshot shows a web interface for configuring aluminium profiles. On the left is a dark blue sidebar with three menu items: '1 DIMENSIONS' (highlighted), '2 STYLELINE', and '3 OVERVIEW'. The main content area is titled 'Dimensions' with the subtitle 'Set the dimensions for your product'. Below this, there is a section 'Aluminium profile - type' containing seven selectable options, each with a small 3D icon and a label: 'Tube', 'L-profile', 'Flat profile', 'Round tube', 'Rod', 'T-profile', and 'U-Profile'. At the bottom, there is a text input field labeled 'Length (min. 200 - max. 8000)' with the placeholder text 'Enter the length' and a unit indicator 'mm'.

[Back](#)

NEWSLETTERS 2024

12.2024 - Outdoor warranty 2025

From 2025, the different warranty periods per patio cover, accessory or component will be simplified. The product warranty on Lapure will change from 5 years to 10 years. Thus, all patio covers from Amani to Lapure will have the same 10-year product warranty.

The warranty on Somfy sensors is 5 years. Adhesion, color and gloss of the paint also receive a 10-year warranty. **Thus, from 2025, we are talking about a 10-year general product and paint warranty after registration.**

Product information: General information & warranty

The registration process is also greatly simplified.

The end customer will still receive 1 free Maintenance Set. This is no longer done via a voucher code, but the Maintenance Set is now automatically delivered with the roofing. The cumbersome procedure for you as a Renson Ambassador/distributor disappears completely. Only the end customer is expected to register via a contact form on our website.

[Back](#)

12.2024 – Outdoor Loggia: product updates

Higher Loggia panels possible as of January 1, 2025!

By applying internal reinforcement, we can now offer panel heights of all Loggia types up to and including 3000mm. So even with maximum passage height of 2800mm, Loggias in front of the beam (Zone A) can now be offered from Amani.

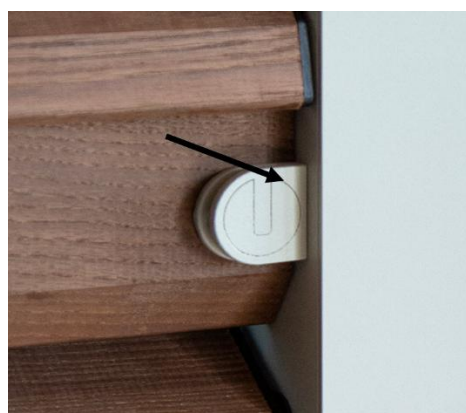


Loggia Privacy: rotating the blades

The Loggia Privacy blades can be rotated separately in two zones: above and below the fixed blade. This can be done in two ways from January 1, 2025:

1. The well-known button operation

This is always located on the inside of the covering. On the button you will find an indication of which field you are operating. Press the correct place on the button and turn a blade until they are in the desired position. The blade can be placed in 5 positions.



2. New: variation with knobless operation

The blades can simply be rotated manually and steplessly. An internal damper provides the necessary resistance. The advantage is that you can also rotate the blades from outside the enclosure and leave them in any desired position.

As a reminder, the blades must always be closed before the panels can be moved.

[Product information: Outdoor Loggia®](#)

[Back](#)

12.2024 - Functioning of rain sensor

What if the rain sensor on my bladed roof does not respond correctly or does not respond at all? There are several possible causes of this. The document below thoroughly explains the steps to check.

What is important from the PDF:

Problem 1: The rain sensor doesn't work properly

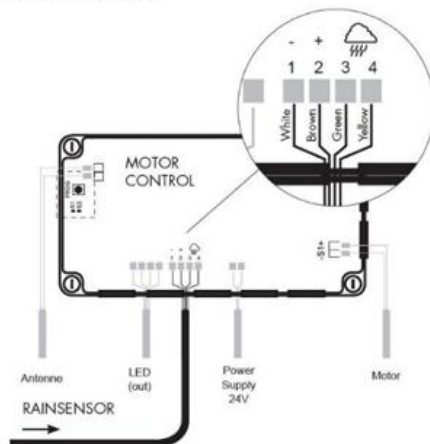
Solution: The rain sensor must be connected to one of the controls.

- You can then test the rain sensor by placing your hand on the sensor.
- The roof should move (close) after a few seconds.
- After 30 sec., the surface area of the sensor should be noticeably warmer.
- Release the sensor.
- The sensor should also cool down again, if it remains hot, it also means that it is defective and it may be that it always indicates that it is raining even though it is definitely dry.

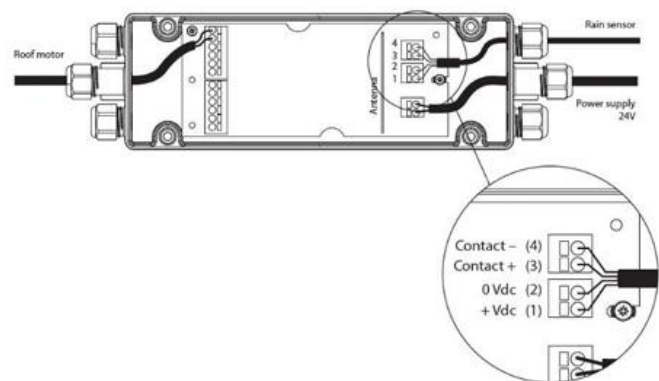
Problem 2: The blades stay open when it rains

1. You must open the printed circuit board for the motor to do this. Only executable by a professional installer!

RTS control



io control



2. Make sure the motor direction is correctly programmed

If you press the up arrow, the roof must open; if you press the down arrow, the roof must close. If this is the other way around the roof will open when it rains!

Do not forget to program the snow position, this must be done when programming the motor control box during initial installation (see installation manual). It is also possible to program a favourite position using the “My” button. If this is not possible something went wrong and you need to reprogram the motor control box.

3. **Check to see if the rain function has been temporarily neutralised**

It is possible that the rain function was temporarily neutralised by overruling the rain sensor by giving a manual command using the Situo remote control.

Manual overruling the rain function will have following effect: If there is moisture or rain (can also be due to touching), the rain sensor will send a signal to shut the blades. If you want to manually reopen the closed roof while the sensor is still wet using the Situo remote control, the rain function is temporarily deactivated.

The rain function will be automatically reactivated after the rain sensor has been dry for more than 15 minutes. As long as this is not the case, the roof will not respond to signals from the rain sensor. The orange LED (only with RTS) of the rain sensor in the motor control box will indicate whether the sensor is active or has been during the last 15 minutes. The motor control box will always give priority to your manual operation. If there is a power cut, the rain function will be reset without having to wait for 15 minutes. The blinking LED light (only with RTS) under the rain cloud will also stop blinking.

Find below an example to clarify point 3 above. The blades of your roof are open and the following weather occurs:



- A. At noon, the rain sensor gets wet => the roof closes.
- B. At 12:30 p.m., the roof is opened using the Situo remote control for whatever reason (manual operation). The rain function is therefore temporarily deactivated. After all, the user has opted to take over (override) the rain function.

- C. At 1 p.m., the rain stops and the rain sensor starts to dry up. The duration of the dryness depends on the conditions, but can take several minutes. Especially if there are large drops of water on the sensor. Suppose that, in this example, it takes 18 minutes for the sensor to dry up.
- D. At 1:18 p.m., the sensor is dry and the 15-minute waiting period starts now. Only with RTS, the orange LED will go from steady on to blinking.
- E. At 1:30 p.m., it starts to rain again. The roof does NOT close because the rain function is only supposed to reactivate at 1:33 p.m. (= 1:18 p.m. + 15 minutes).
- F. It stops raining at 2 p.m. The sensor starts to dry up again. Suppose that it once again takes 18 minutes for the sensor to dry up.
- G. At 2:18 p.m., the rain function is reactivated. The roof is still open to the position it was in at 12:30 p.m.
- H. It starts to rain again at 4 p.m. The roof closes because the rain function is once again active. This was automatically reactivated at 2:33 p.m. The user cannot see which status the control is in. Only with RTS, the orange LED in the control box will indicate this.

4. **Check the temperature outside**

If the temperature is below 5°C and the frost function is active (needs to be activated see installation manual) the rain sensor when wet will act as a snow sensor, the snow position has priority over the rain position.

The snow position is set (programmed) when programming the motor control box (during initial installation). This snow position can be closed, or vertical, or in any other position of your choosing. If there is little risk of snow heavily piling up on the roof, then also the closed position can be selected as the snow position (snow and rain same closing position).

5. **Activation of the snow (only in combination with rain sensor) and frost position (15°)**

The snow and frost position are standard not activated!

Note: In areas where regular 50 cm snowfall occurs, you also need to install an optional rain sensor. In the case of heavy snowfall, the blades will automatically change into the programmed snow position.

The activation of the temperature sensor is done by the installer.

Important remark concerning a correct functioning of frost- and snow protection!

The temperature sensor is located inside the motor control box. It means that this sensor measures the inside temperature, and not the outside temperature.

During tests we concluded that an outside temperature of 0° normally corresponded with an inside temperature of 4°. So we programmed the control box that frost- and snow protection is activated as soon as the temperature inside the motor control box gets below 4°. In some conditions the inside temperature can show small deviations compared to the outside temperature. This means that in some cases the blades will not open according to the required conditions.

Next example to clarify: assume that the outside temperature is -1°C (hardly frost conditions) but the inside temperature has not dropped below 4°C (because for example the profile and box has been warmed up by the sun), for this reason the blades will not open to a frost position. If additionally it starts snowing, the rain sensor will sense this as rain (and not snow) and the blades will close instead of opening.

This might cause a problem in areas where snowfall can occur frequently. This can be avoided by turning of the rain sensor during the winter and operate the blades manually.

[Back](#)

11.2024 - Customized Solutions

Something new is coming... A Renson elaboration that pushes boundaries, transforms ideas and inspires you to think big. **Curious? Keep an eye on the newsletter on 19 December!**

[Back](#)

10.2024 - Packaging: guidelines for preventing sun damage

To prevent damage to the products, we would like to remind you of the importance of never leaving the boxes in direct sunlight. In addition, it is also a good idea to keep the profiles wrapped in bubble wrap out of full sunlight. This could cause the bubble wrap to burn into the paint. You can recognize the possible consequences of this in the images below.



[Back](#)

09.2024 - Standard colours

In addition to the colour guide, there is now also a handy colour chart in which you have an overview of the Top 20 and Shop in Shop colours at a glance. In addition to the RAL colour, this colour chart also lists the powder code.

In RIO, you will find different powder codes for one RAL colour. If you wish to order a Top 20 or Shop in Shop colour, make sure you have selected the correct powder code when ordering in RIO.

The [colour chart](#) is provided digitally so that you always have the most recent version available.

[Back](#)

09.2024 – Algarve: Drive rod adjustment

The recess on the top of the drive bar takes the position of the motor bracket into account from now on. As a result, we no longer have any weakening of the profile at the level of the mounting holes of the motor bracket. In the past, this recess was always according to the same dimension. Thus, we avoid the possible breakage of the drive bar at the level of the fixing holes.



[Back](#)

09.2024 - RIO updates - Algarve Lite

Since September, we have launched the Algarve Lite. In the document below, we briefly clarify the [Rio configuration](#) of this Algarve standard type.

[Back](#)

08.2024 - Algarve Lite

You might notice that consumers want to invest in their outdoor experience by the many requests for quotes. Yet a lot of price proposals also remain open, due to 'out of budget' or other priorities. With the Algarve Lite, we now offer customers a cheaper standard configuration with familiar Renson quality and limited personalisation options. Time to breathe new life into your open quotes!

Discover more details in the leaflet below, or contact your Renson representative for more information.

Still have open Algarve quotes? Then send the email below to your customers and give them that last extra push in the right direction.

[Leaflet Algarve Lite](#)

[Back](#)

05.2024 - Benefits of an Outdoor Service Case

Easily order your **Outdoor Service Case** via RIO and ensure your installers are always prepared. The case includes motors, controllers, sensors, screws, and more. When you purchase a service case, you immediately enjoy numerous benefits:

- Increased customer satisfaction
- Immediate availability of spare parts
- Fast and efficient on-site assistance
- Fewer trips back to the yard
- No overdue invoices from end customers

[Back](#)

04.2024 - Loggia Linea

The **Loggia Linea** can be ordered in RIO from 1 May as an integration in Algarve (Canvas), Camargue (Skye) or separately as a reorder.

The vertical rectangular blades are available in aluminium (powder-coated or wooddesign version) or in thermo-ayous wood.

The clean design of the vertical lines is further enhanced thanks to the ingenious concept of the transverse joint. The latter ensures that the spacing between the vertical blades or between the blades and the frame always remains the same.

The Loggia Linea infill follows the same pricing as Loggia Paro and Loggia Plano.

Marketing: When the POS material was updated last year, you already received a sample of this to add to the Shop-in-Shop Loggia display.



[Back](#)

04.2024 - Loggia (Double) Canvas

Our Outdoor canvas range is further expanded with the new **Loggia (Double) Canvas** fabrics, which will be orderable on RIO from 1 May.

These new canvases will be offered at the same price.

Together with our NOA partner 2TEC2, we have developed a matching canvas for the Loggia (Double) Canvas for each of our design styles. These canvases are slightly coarser in structure and therefore look more natural and cosy. Their durable materials and high UV resistance guarantee a long life. Moreover, the canvases are easily washable for a long-lasting stylish look. Of course, they can also be ordered separately from the design styles.



The new **Outdoor Loggia (Double) Canvas** collection consists of the following colours:

- Delicate Beige matching Pure Essence
- Crystal Teal matching Crystal Lounge
- Desert Rock matching Earth Oasis
- Deep Wood matching Spiritual Harmony
- Antique Bronze matching Idyllic Garden
- Soft Coral matching Tech Cocoon

Marketing: The accompanying sample folder of these fabrics was already sent in autumn 2023.

[Back](#)

04.2024 - Dimmable io heating receiver

From now on, the optional Somfy io heating receiver is also dimmable!

Dimming here, as with the RTS heating receiver, is done in 3 steps: 33% - 66% - 100%. So the on/off version for io is no longer available and will be replaced by the dimmable version from now on.

Up to 3000W can be connected to this io receiver. So for the Beam with Heat (2400W), this means that 1 receiver is needed per heating element. So for the Lineo Heat (1400W), you can connect 2 heating elements to 1 receiver.

Consult the modified [installation guide](#).

[Back](#)

04.2024 - Use of the colour guide

To avoid misunderstandings or wrong colours on delivery, we would like to remind you of our colour guide and how to use it correctly when entering a final colour in RIO.

- The colours in **bold** in the colour guide are equal to the **TOP 20** Renson Outdoor colours.
- The underlined colours correspond to the colours present in the Outdoor Shop-in-Shop display.

In the last column you can find the exact powder code corresponding to each colour. As always, you can easily consult the colour guide via our [Professional Portal](#).

[Back](#)

02.2024 - Outdoor curtains

We're excited to introduce six new curtain fabrics from the Lumis collection! These modern fabrics are weather-resistant and crafted entirely from 100% PP, available at the same pricing as our existing collection. Orders for these new fabrics can be placed starting today through RIO.

Additionally, we'd like to inform you that the four Lounge fabrics (in black, white, beige, and gray) have been discontinued.



[Back](#)

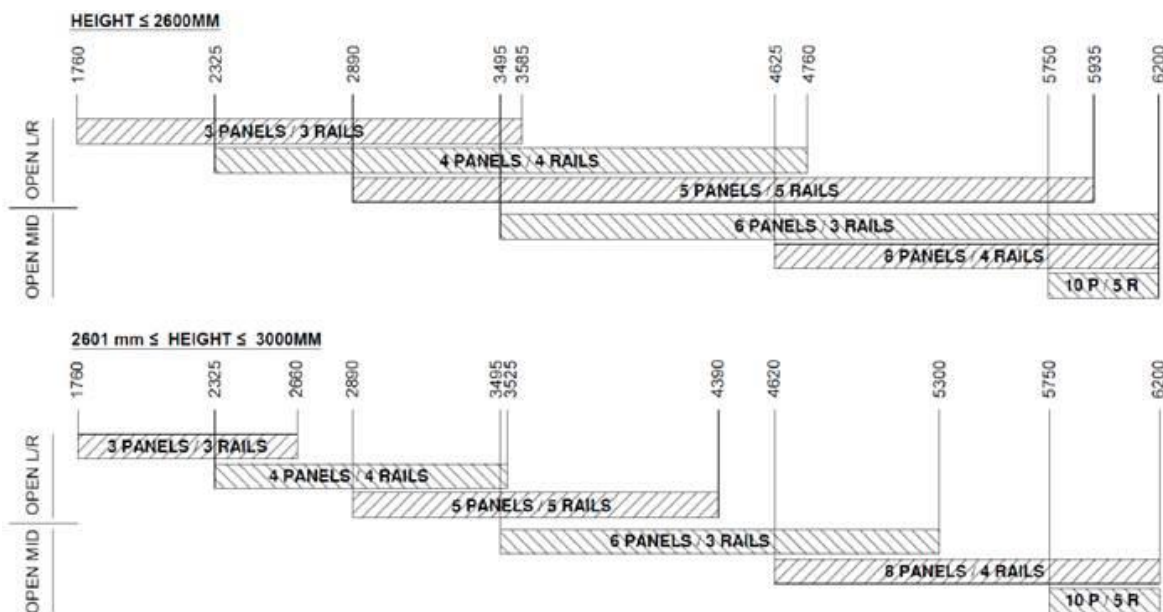
02.2024 - Glass sliding wall

You can now place orders for glass walls exceeding 102 in/ 2600 mm in height through RIO. In the canopy configuration, heights can go up to 2800 mm, and for subsequent orders, depending on the configuration, heights can reach up to 3000 mm.



Additionally, you have the option to select broader glass panels, reducing the number of panels required for specific wall widths. Given that pricing is determined per panel, this change offers an instant cost benefit.

The selection of available panels is determined based on the sliding direction, along with the height and width of the glass wall.



[Back](#)