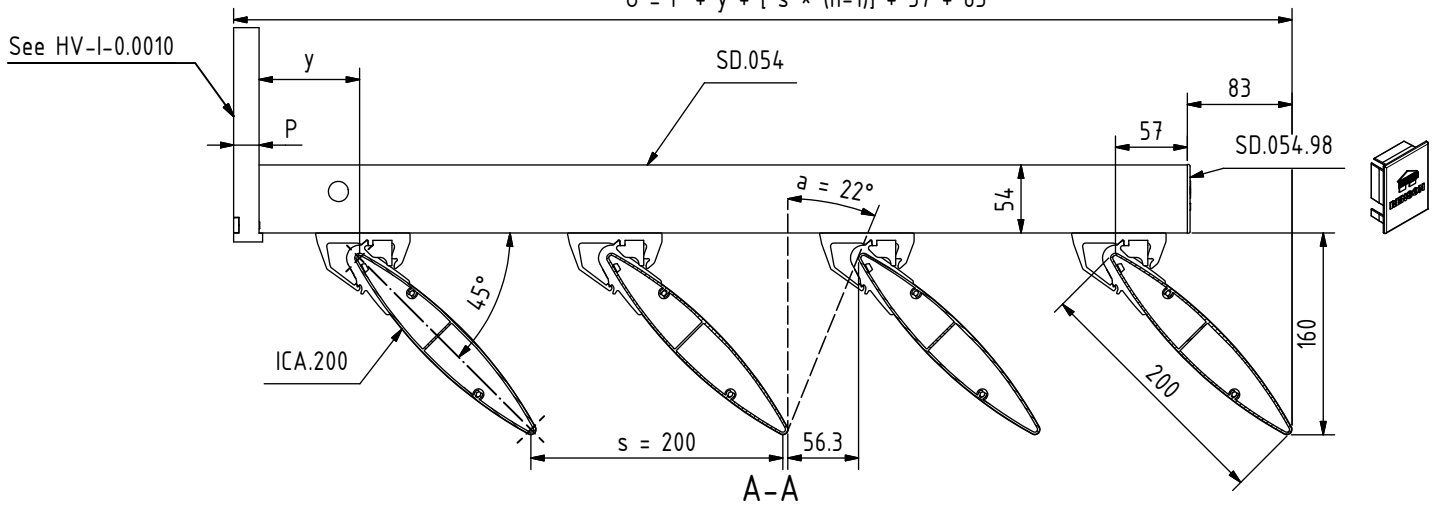
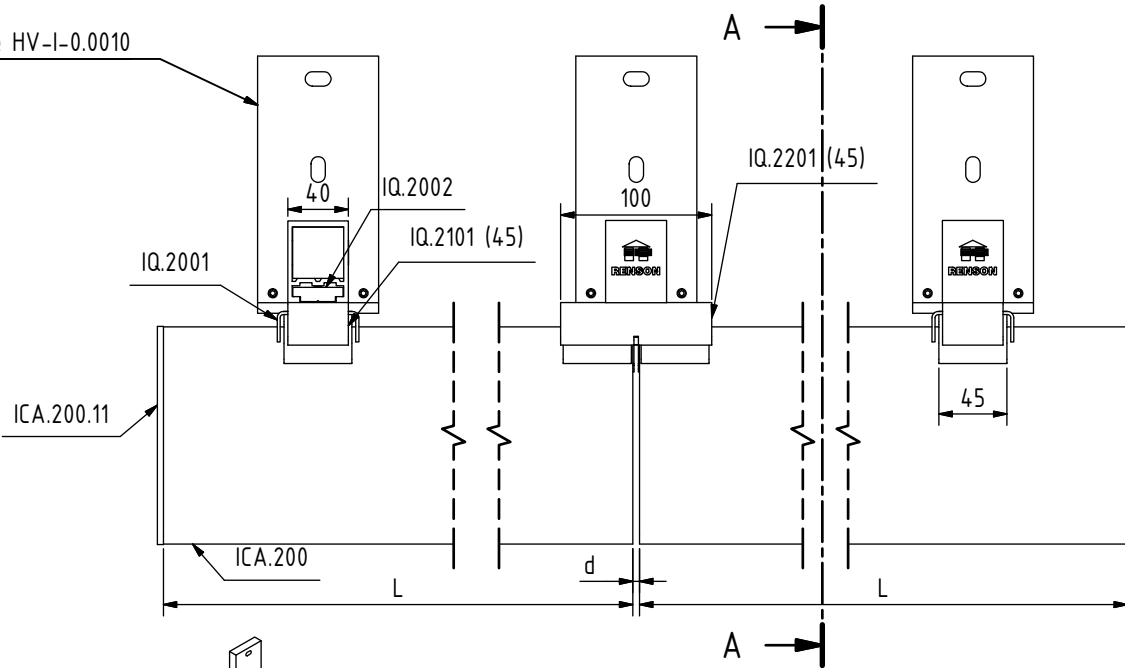


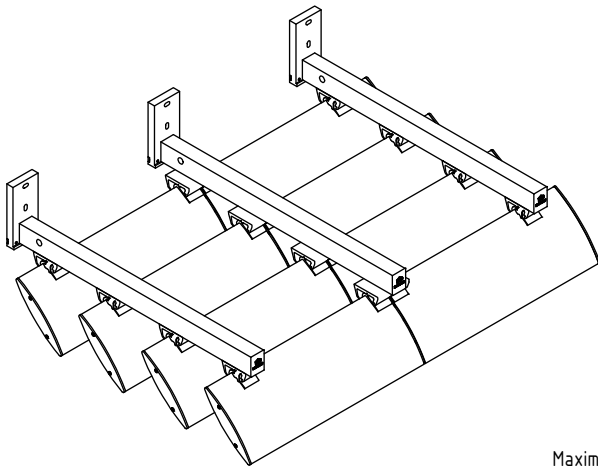
$$U = P + y + [s * (n-1)] + 57 + 83$$



See HV-I-0.0010



FRONT VIEW



KEY REFERENCE

- L: Length of blade [mm]
- d: Expansion joint [mm]
= 0,001 x L
- s: Step of blade [mm]
- a: Min. sun entrance angle [°]
- U: Projection [mm]
- y: ≥ 80 mm
- n: Number of blades
- P: Thickness wallbracket [mm]

Maximal dimensions to be discussed with R&D Dept. of NV Renson Projects.



RENSON FABRICATIONS Ltd
Fairfax Units 1-2-3
Bircholt Rd. - Parkwood I.E.
Maidstone, Kent, ME15 9SF

Tel.: 01622 754123
Fax: 01622 689478
www.renson.eu

HORIZONTAL FIXED

TYPE: ICARUS

SUBTYPE: QUICKFIX

DESCRIPTION: ICA.200 (45°) + SD.054

PRODUCT SHEET

SHEET N°

HV-I-1.0320

ISSUE

V.01

Scale:

1/5

Orig. format:

A4

All rights reserved to NV RENSON PROJECTS. This drawing shall not be copied nor showed to third parties without written permission of NV RENSON PROJECTS.

R:\CAD\91_ProductFiches\HV\HV-I-1_0320-RF-idw