

# 421 RC2

## Burglar resistance louvre class RC2

BURGLAR-  
RESISTANT  
LOUVRE

ALUMINIUM



### MATERIAL

- Made from aluminum profiles AlMgSi 0.5 [according to EN 12020-2]
- Stainless steel insect mesh 304 - 2.3 x 2.3 mm
- Finishing: anodized in satin colour [20 micron] or powder-coated in any RAL or Syntha Pulvin colour [40 micron]

### DIMENSIONS

- Blade pitch: 50 mm
- Depth: 46 mm
- Flange size: 40 mm
- Minimum dimensions: 250 x 250 mm

### OPTIONS

- Stainless steel 304 mesh [6x6/10x10/20x20 mm] or without
- Insect screen or mesh in stainless steel 316
- Without flange
- Water channel
- Drainage profile
- Removable insect mesh
- Filter

### FEATURES

- Aesthetical and functional high-quality louvre
- Burglar resistance according to class RC2, certificate surface 0.44 <math><0 <6 \text{ m}^2</math>, in accordance to EN 1627 up to 1630 and including [Sept. 2011]
- Easy to install using brackets
- 100% stainless:
  - Entirely assembled of aluminum profiles
  - All connecting pieces in aluminum and stainless steel

### TYPICAL APPLICATIONS

- Schools
- Shops
- Apartments

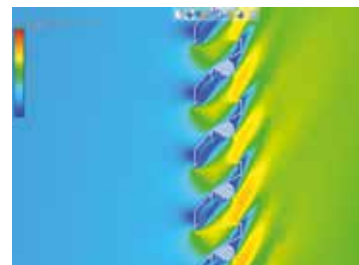


## TECHNICAL SPECIFICATIONS

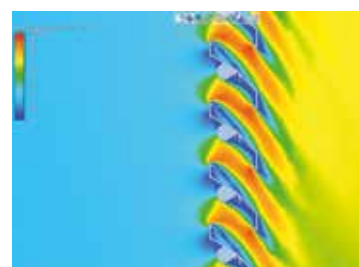
All properties are valid for the standard version of the Louvre, unless otherwise stated.

Airflow	[EN 13030]
K-factor [entry]	13.82
K-factor [discharge]	12.85
C <sub>e</sub> coefficient	0.269
C <sub>d</sub> coefficient	0.279
Technical data	
Visual free area	70%
Physical free area	43%
IP class [louvre with mesh; electrical installation at least 100 mm from louvre]	IP2XD

### AIR FLOW



Supply



Extraction

## TECHNICAL DRAWINGS

