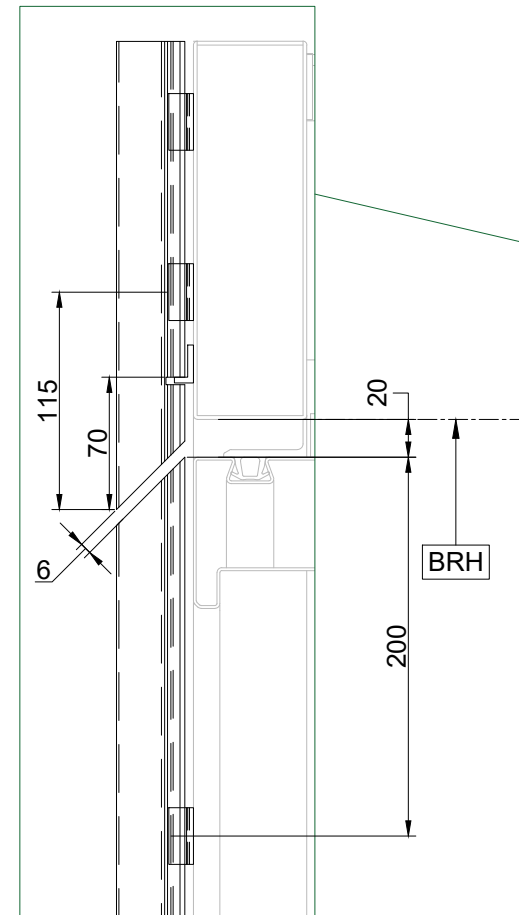


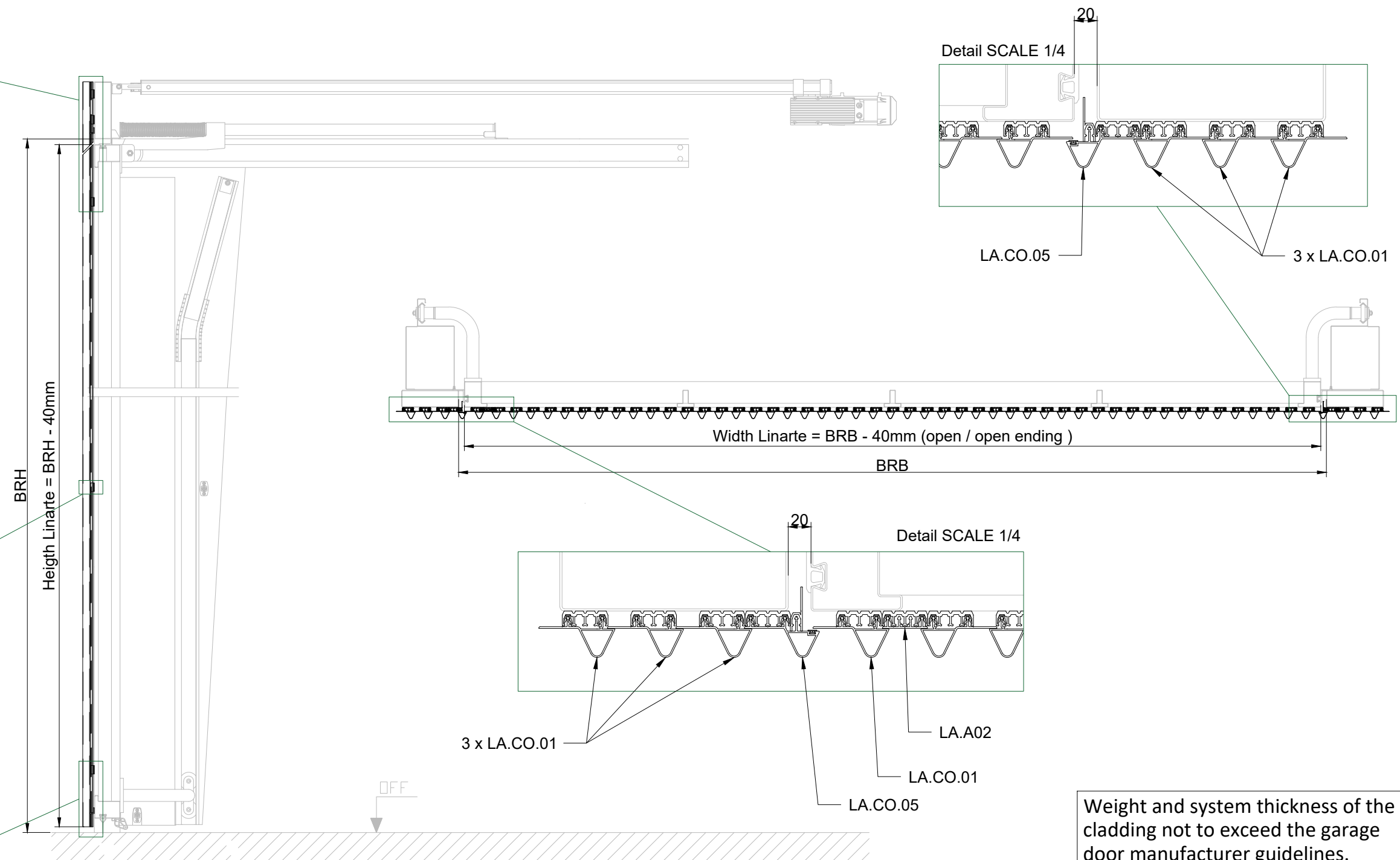
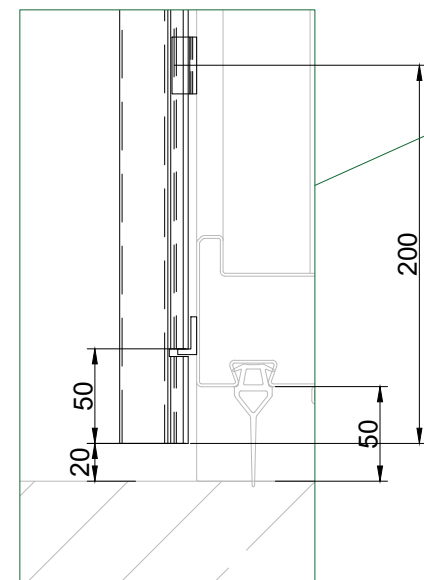
Detail SCALE 1/4




Detail SCALE 1/4



Detail SCALE 1/4



Weight and system thickness of the cladding not to exceed the garage door manufacturer guidelines. Optical sensor to be used for finger clamp protection. The installation must be complaint to the guidelines of the garage door manufacturer and complaint with EN13241

Approved by System supplier  Hörmann  ET 500	 Creating healthy spaces www.renson.eu - 8790 Waregem (Belgium) <small>This drawing is owned by RENSON and may not be copied or shown to third parties without written permission.</small>	Description : Linarte on Hörmann ET500-3		Sheet : 1/1
		Use. : Linarte Cone	Project. nr.:	Scale : 1/16
		Part. nr. : -	State : Released Creation date : 09/01/2025 Doc. nr.: Linarte On Hörmann ET500-3 Cone	Drawn : Slonc Size : A3 units in mm