

MODEL PLACING GUIDELINE

Endura Twist model can be placed directly on the wall, thanks to its wall-based family type.  
The non-hosted family type is also provided for alternate use.

Specify Types

Family:  
Renson\_Endura\_Twist\_Hori

Types:

Type	Flow_Rate_Qnom _l/s/m	Flow_Rate_Qnom _m³/h/m	Installation	Depth_Ventilatio n	Height_Ventila n
	(all)	(all)	(all)	(all)	(all)
Endura Twist - 2x1	3.33 L/s	12	On top of the window profile	345.0	110.0
Endura Twist - 2x2	6.67 L/s	24	On top of the window profile	345.0	110.0
Endura Twist - 2x3	10.00 L/s	36	On top of the window profile	345.0	110.0
Endura Twist - 2x4	13.33 L/s	48	On top of the window profile	345.0	110.0
Endura Twist - 2x5	16.67 L/s	60	On top of the window profile	345.0	110.0
Endura Twist - 2x6	20.00 L/s	72	On top of the window profile	345.0	110.0

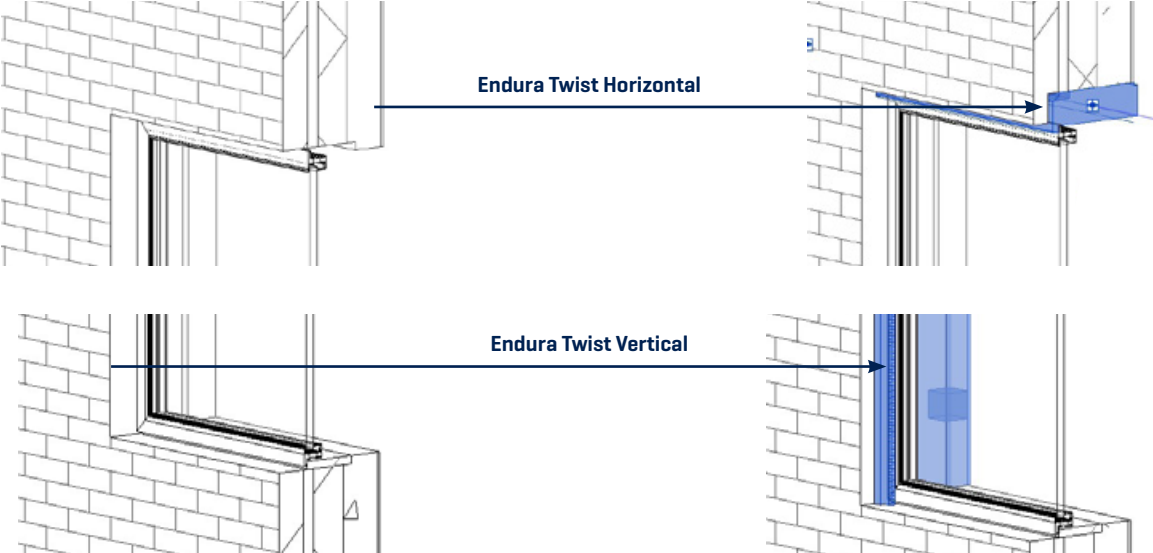
Select one or more types on the right for each family listed on the left

OK

Cancel

Help

Select types catalog base on numbers of fans.



Place Endura Twist directly on the wall  
surface [Wall-Based Revit family]

Window + Endura Twist

OVERVIEW PARAMETERS IN ENDURA TWIST

Properties

Renson\_Endura\_Twist\_Horizontal\_Wall-based  
Endura Twist - 2x1

Air Terminals (1) Edit Type

Construction

Power\_Supply\_Left

Power\_Supply\_Right

Air\_Flow\_Arrow\_Downwards

Air\_Flow\_Arrow\_Upwards

Dimensions

Length\_Total

Height\_Void

Depth\_Facade

Depth\_Void\_Front

Depth\_Void\_Back

Effective\_Length

L1

L2

Size

Mechanical

Mechanical - Flow

Flow\_Rate\_Qnom\_l/s/total length

Flow\_Rate\_Qnom\_m³/h/total le...

Watertightness\_In\_Open\_Positio...

Identity Data

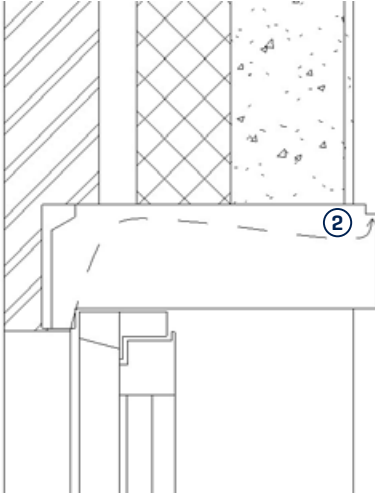
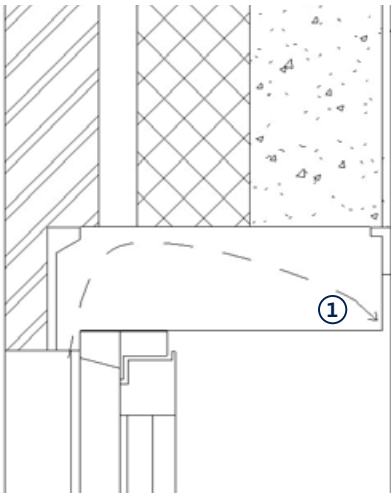
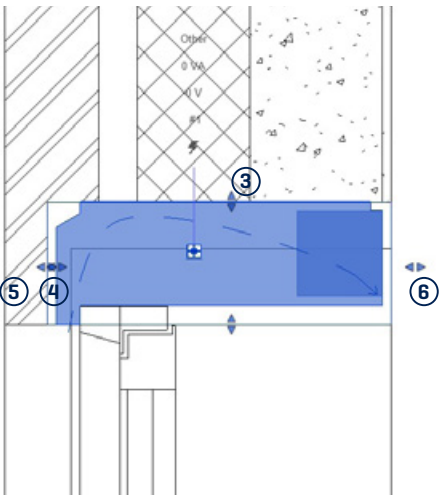
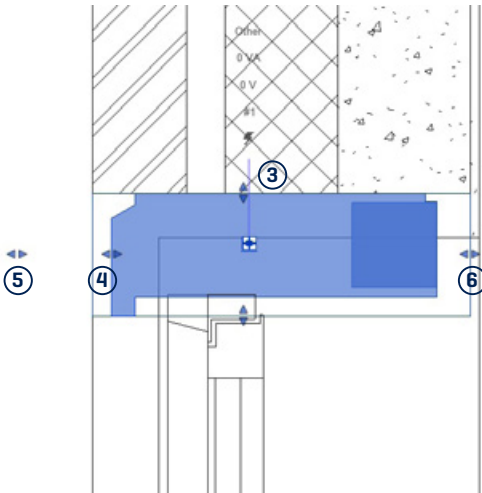
Phasing

Model Properties

Bicolor\_Color Exterior

Bicolor\_Color Interior

Air flow value



Drawing detail will appear when  
'Fine' detail level is selected

**Important remark:**  
Check Renson's technical information on the technical restrictions [like dimensions, installation details, ...] of each product type.





Endura® Twist

**ENDURA® TWIST**

 **RENSON®**  
Creating healthy spaces