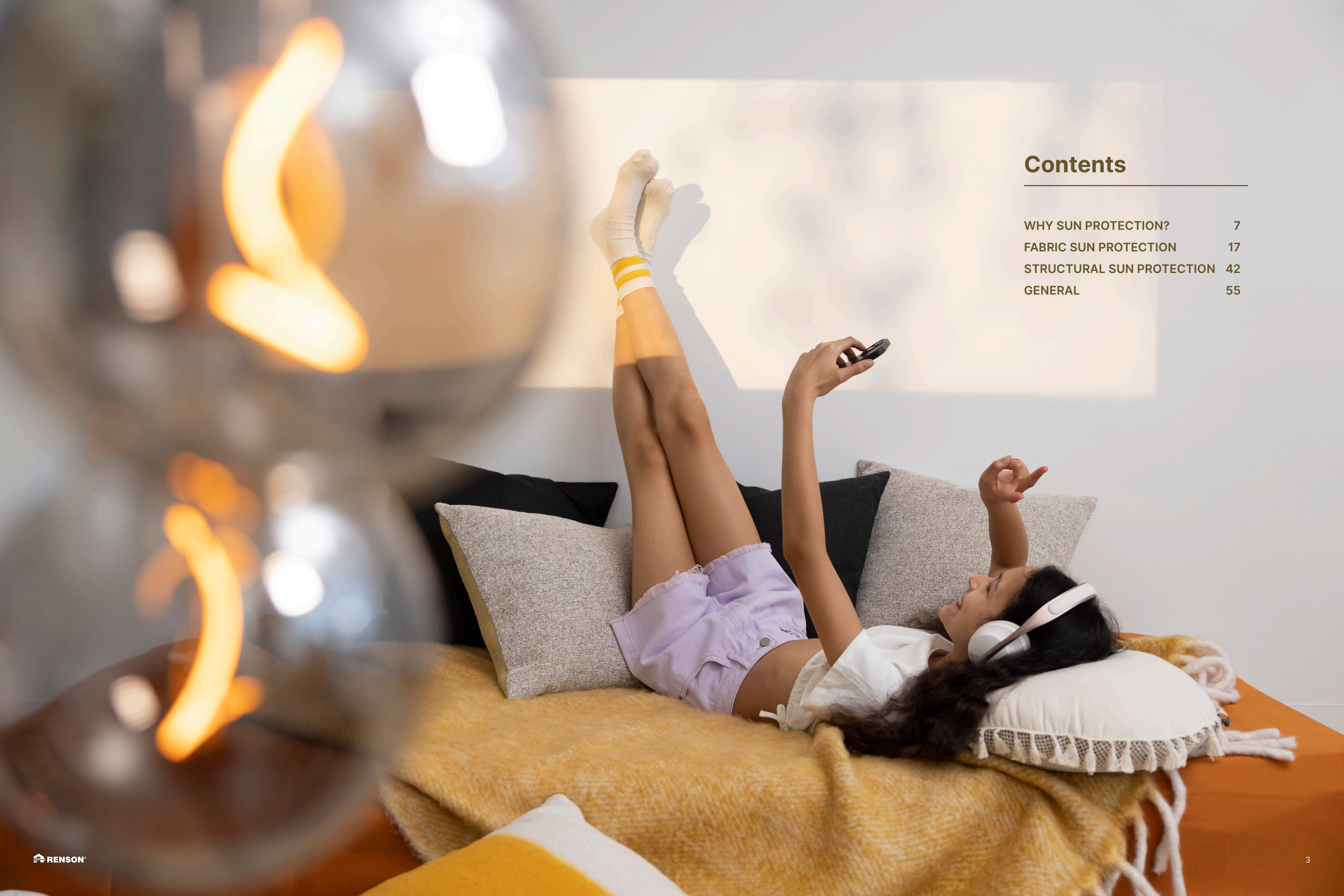


SUN PROTECTION





Contents

WHY SUN PROTECTION?	7
FABRIC SUN PROTECTION	17
STRUCTURAL SUN PROTECTION	42
GENERAL	55



Nightcooling

ZipShade®

Comfort for every season

"Creating healthy spaces" is Renson's core mission. What we need now are natural solutions: maximizing daylight without overheating and ensuring fresh air circulation without compromise. In short, it's about seamlessly blending the outdoors with the indoors, creating environments where nature and living spaces connect effortlessly.

Whether it's through ventilation, sun protection or outdoor living, the key is finding the perfect balance between advanced technology and reconnecting with nature. It's about breathing just as freely inside as you do outside. Living in harmony with yourself means enjoying the same level of comfort outdoors as you expect inside. Whether you're in a house, or in an apartment. Keep reading to discover how sun protection can truly make a difference.

Did you know that a combination of outdoor sun protection and night cooling can keep the indoor temperature under control all year round? And that's without having to resort to an energy-guzzling air conditioner!



Why outdoor sun protection?

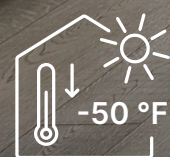
Outdoor sun protection blocks the sun's rays before they reach your windows, helping to keep indoor temperatures under control. During warmer months, sun protection helps cool your home without relying on energy-draining air conditioning. But that's not all: it also reduces glare on screens and prevents furniture from fading. Most importantly, it does this while maintaining your view of the outdoors and ensuring your privacy.

As building standards become more stringent, homes today are so well insulated that, in the summer, once heat gets in, it's tough to get it out. That's why prevention is key - it's better to stop the heat before it gets in.

! Did you know that dynamic sun protection can reduce your cooling costs by over 36%?

ZipShade®

Panovista® Max



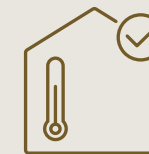
REGULATE HEAT FROM THE SUN AND PREVENT OVERHEATING

Did you know that in North America, outdoor
sun protection can cool homes by up to 50 °F

WHY SUN PROTECTION?



The benefits of outdoor sun protection



THERMAL COMFORT

Outdoor sun protection allows you to control the amount of sunlight entering your home, which helps you manage indoor temperatures. A connected system automatically takes care of everything, from maximizing solar heat absorption in the winter to preventing your home from overheating in the summer. This means you can enjoy a comfortable indoor climate year-round while reducing your heating and cooling expenses, all without any effort. It's the smart, sustainable and comfortable choice.



VISUAL COMFORT

Our sun protection screens allow natural light to flood your home, even when they're down. Plus, your view of the outdoors remains unobstructed, so you never feel like you're living in a closed-off space. At the same time, the screens block direct sunlight from hitting the glass, reducing glare on your screens and providing privacy by preventing people outside from looking in. It's a true win-win.



DURABILITY

Our outdoor sun protection is built to last in all aspects, from its production, to its lifespan, and functionality. Our products are rigorously tested to ensure they continue performing reliably over the long term. Plus, by optimizing the use of your screens, you can save on heating costs in winter, and reduce the need for energy-draining air conditioning in the summer. For an even more sustainable option, consider using a solar cell to power your system with renewable energy.



Outdoor sun protection type

	DYNAMIC OUTDOOR SUN PROTECTION				
	Windproof screens	Exterior blinds	Roller shutters	Articulated arm awnings	Projection screens
Thermal comfort (insulation)	✓	✓	✓ ✓	✗	✗
Thermal resistance (overheating - indoor climate)	✓ ✓	✓ ✓	✓ ✓	✗	✓
Visual comfort (daylight management, glare)	✓ ✓	✓ ✓	✗	✓	✓
Outdoor views	✓	✓	✗	✓ ✓	✓ ✓
Possible dimensions	✓ ✓	✓	✓	✓ ✓	✓
Preferred sun protection position façade orientation	ESW	ESW	ESWN	ESW	ESW
Wind load	✓ ✓	✓	✓ ✓	✓	✗
Typical solar factor* (with Type C glazing)	0.09	0.1	0.05	0.17	0.12
Typical light transmittance factor**	0.05	0.05	0.02	✗	✗

Classification	
✓ ✓	very good
✓	good
✗	not relevant

* Solar factor (g_{tot} value):
The total percentage of solar energy that comes inside through a window with sun protection.
** Light transmittance factor (=TV): The greater the light transmittance factor, the more light comes through the sun protection, and the higher the light intensity level (lux) in the room.

Which outdoor sun protection is right for you?



FABRIC SUN PROTECTION (P. 17)

If you're seeking outdoor sun protection that integrates subtly with your building, fabric sun protection is the perfect choice. The cassettes and side vertical tracks can be neatly concealed within the façade, making them barely noticeable.



STRUCTURAL SUN PROTECTION (P. 42)

Structural sun protection, such as blades, sliding panels, or aluminum canopies above your windows, adds a unique architectural touch to your building. These elements can also highlight and emphasize specific lines, shapes, and design features.

Loggia®

Sunclips®

Panovista® Max

ZipShade®

FABRIC SUN PROTECTION

The sun is a natural source of warmth, and sunlight has a positive effect on our well-being. However, excessively bright or low-angle sunlight can cause discomfort — which is when it's time to take action. With transparent fabric sun protection installed on the outside of your windows, you can enjoy the benefits of the sun year-round, without compromising your view of the outdoors.



Benefits of fabric sun protection

We all need natural daylight. By combining outdoor sun protection with clear glass, you can enjoy maximum natural light inside your space while still being protected from the sun.



MAINTAIN YOUR VIEW WHILE PROTECTING YOUR PRIVACY

With the screens closed, you can still enjoy the view outside while natural light flows in. This is a key advantage of screens compared to roller shutters, which block all light. However, if you prefer complete darkness, blackout screens are an excellent option, especially for spaces like the bedroom.



HIGHLY WIND RESISTANT

Thanks to our innovative Zipshade® Technology with its clever zipper system, the fabric remains securely windproof within the side vertical tracks, no matter its position. Additionally, when fully closed, the screen also acts as an insect barrier, keeping bugs out.



THE ULTIMATE AESTHETIC SOLUTION

Small fabric head boxes with narrow side vertical tracks and a wide range of colors: that's what makes our motorized exterior screens the ultimate aesthetic choice for your home. This is particularly effective when they are fully integrated into the building.



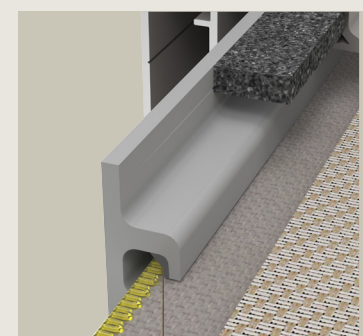
Summer



Winter

ENJOY EVERY SEASON

The dynamic nature of screens enables you to enjoy the best of the outdoors in every season unlike solar protection glazing, which blocks the sunlight year-round. Screens block heat while allowing maximum daylight in during the summer, and in winter, they help retain the sun's warmth. This ensures you're always in control of your indoor comfort, no matter the season.



Renson fabric sun protection is windproof up to 80 mph thanks to our **Zipshade® Technology**. The windproof inner rail also comes with a patented, co-extruded wear-resistant layer known as: our **Smooth Technology**. This ensures smooth, durable and silent guiding of the fabric.

! Did you know that thanks to our Zipshade® Technology and its sleek, minimalist design, ZipShade® Minimal can also be seamlessly integrated indoors? When included early in your building's design, ZipShade® Minimal provides the ideal solution for blocking out light in your bedroom, ensuring a darker, more restful environment.



FIND THE RIGHT FABRIC SUN PROTECTION FOR YOU

STEP 1: SELECT YOUR APPLICATION	24
SURFACE-MOUNTED	24
SURFACE-MOUNTED USING SOLAR POWER	27
RECESSED	29
FREESTANDING APPLICATIONS	33
SUN PROTECTION FOR SUNROOMS	35
STEP 2: SELECT YOUR CONTROLS	37
STEP 3: SELECT YOUR FABRIC AND COLOR	39

SUN PROTECTION FABRIC

ZipShade®

Panovista® Max

STEP 1: SELECT YOUR APPLICATION

SURFACE- MOUNTED INSTALLATION METHOD 1



Discreetly installed in front of existing windows or doors with fully finished cassette. Suitable for retrofit installation or minor renovations, without any impact on the building structure. The fabric color and screen coating can easily be selected to fit your windows and existing architectural style.

ZIPSHADE®

- Standard range
- Acclaimed technologies



ZIPSHADE® MINIMAL

- Minimum impact on architecture
- Minimum cassette size
- Minimum side vertical track with sightline of just 0.79"
- Silent motor available for indoor use





SURFACE-MOUNTED USING SOLAR POWER



SUN PROTECTION WITHOUT ANY WIRING

Our Solar screens are windproof, surface-mounted, and powered by solar energy. A solar cell on the front of the cassette powers the screen's autonomous controls, eliminating the need for separate electrical wiring. This means the windproof screen can be easily installed on your window without any need for invasive work to run wiring. Plus, you'll benefit from a seven-year warranty on our solar kit, which includes the motor, solar cell, and battery. It's the ideal solution for renovation projects!

ZIPSHADE® SOLAR

- Standard range
- Featuring cutting-edge technologies

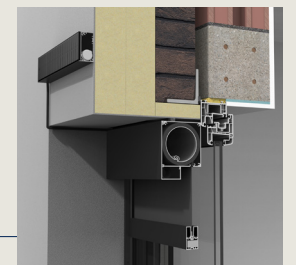


ZIPSHADE® MINIMAL SOLAR

- Minimum impact on architectural design
- Compact cassette size
- Slim side vertical track with sightline of just 0.79"



! Did you know that ZipShade® Solar can also be ordered with a separate solar cell, including a battery for façade installation? This allows you to install the solar cell in a different location on the façade where it can capture more sunlight for optimal efficiency.





RECESSED INSTALLATION METHOD 7



BUILDING A NEW HOME OR REPLACING YOUR WINDOWS?

If so, your screens can be fully recessed in front of the window for a completely invisible installation. You can easily customize the fabric color and coating of the cassette and vertical track to match your windows. Even the bottom bar tucks seamlessly into the cassette, giving you maximum natural daylight and an unobstructed view of the outdoors - all with minimal impact on your home's exterior appearance. The fabric can be positioned close to the window or further away, depending on your preference. This flexibility allows you to easily combine it with features like a fly screen or sliding window with external handles, for added convenience.

ZIPSHADE®

- Standard range
- Featuring cutting-edge technologies
- Can be combined with corner solutions

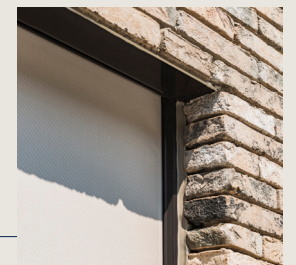


ZIPSHADE® MINIMAL

- High-end design
- Minimum cassette depth for seamless integration into the facade
- Innovative solutions for minimalist windows, including a completely freestanding coupling side track, perfect for wide windows up to 39.37 ft.



! Did you know that the windproof and waterproof integrity of your façade is always maintained? Thanks to its unique, three-part recessed vertical track, the screen cassette remains easily accessible, without the need for any breaking or risk of damage!





Panovista® Max

CORNER SOLUTIONS

SCREENS FOR GLASS-ON-GLASS CORNER WINDOWS

Aluminum side vertical tracks or visible cable systems can ruin the look of your glass-on-glass corner or sliding windows, when fabric sun protection is needed. Fortunately, Panovista and Panovista Max offer elegant solutions that maintain your panoramic view without compromising style or functionality.

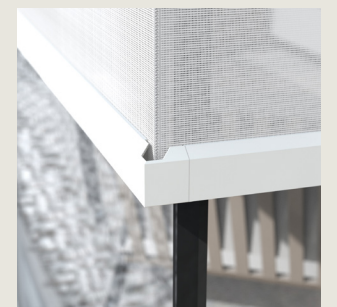
PANOVISTA®

The Panovista with a smaller cassette size has detached corner fabrics.



PANOVISTA® MAX

With Panovista Max, the two fabrics zip together at the corner when lowered, creating a fully secured corner and providing enhanced wind resistance. Due to its technical design, yearly maintenance is required to ensure optimal performance.



! Did you know that Panovista Max is the only windproof sun protection solution designed specifically for glass-on-glass corner windows? It's the perfect fit for the large glass panels and minimalist aesthetics that define contemporary architecture.



ZipShade®
Freestanding

FREESTANDING APPLICATIONS

ZIPSHADE® FREESTANDING

Screens can easily be installed on outbuildings, patio covers and pool houses. To maintain your garden view, ZipShade® can be equipped with a transparent crystal window, allowing you to enjoy the outdoors without obstruction.



ZIPSHADE® MINIMAL FREESTANDING

Thanks to its ingenious design, ZipShade® Minimal offers extremely high wind resistance as a freestanding application. This, combined with finishing of the highest quality, makes this range the freestanding screen of choice!



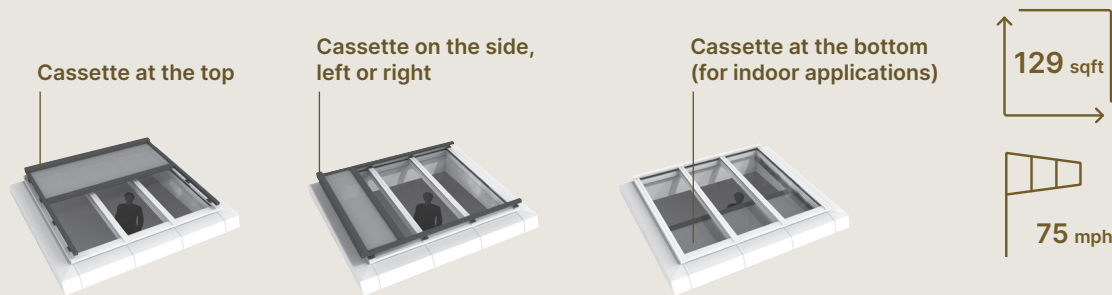


SUN PROTECTION FOR SUNROOMS

Sunrooms and skylights bring in plenty of natural light, but they also allow significant solar heat to enter. Horizontal screens are the ideal outdoor sun protection solution for this issue. They block the sunrays before they reach the glass, helping to keep indoor temperatures from rising too high.

ZIPSHADE® TOP

ZipShade® Top is a horizontal fabric sun protection featuring a revolutionary tensioning method. Combined with ZipShade® Technology, it ensures that the fabric remains perfectly taut at all times, even without the need for supporting rollers. Additionally, the cassette can be installed at the top, bottom, or even on the side.



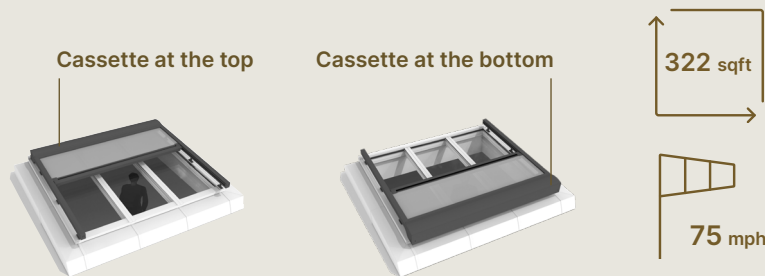
ZIPSHADE® TOP SOLAR

The new Zipshade Top Solar is the latest addition of the Renson Solar range, and that up to as much as 129.17ft², a unique feature. The Zipshade Top zenithal sun protection offers an effective and stylish solution for sunrooms and skylights. Now also with solar control. Especially on roofs, this is an advantage. There is no need to interrupt the roof covering to feed a power cable through.



ZIPSHADE® TOP MAX

ZipShade® Top Max is the larger version of ZipShade® Top and can be used to cover widths of 19.66 ft. in one piece, and 322.92 ft² in total. With ZipShade® Top Max, the cassette can be fitted at the top or at the bottom, depending on your preference.



! Did you know that ZipShade® Top Max can also be used as a freestanding sun protection solution on the top of an existing structure?





STEP 2: SELECT YOUR CONTROLS

Fabric Sun Protection can be operated in various ways.

Control method	Switch	Remote control	Smartphone or tablet
Locally, near the sun protection	✓	✓	✓
Indoors	✗	✓	✓
Anywhere, including at the office or on vacation	✗	✗	✓
Your comfort	✓	✓ ✓	✓ ✓ ✓



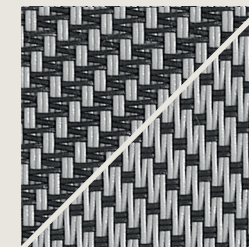
Sergé
fiberglass
fabric

STEP 3: SELECT YOUR FABRIC AND COLOR

FABRIC

Once you've decided on fabric sun protection, there are various fabric types to choose from, ranging from translucent to 100% **blackout**, and options like **fiberglass** or **polyester**. Each fabric type has its own unique characteristics, color options, and applications to suit your needs.

Sergé

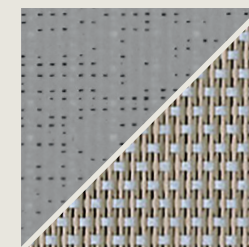


FIBERGLASS FABRIC

Fiberglass fabric is the ideal choice for blocking sunrays while still allowing light to pass through. This screen fabric is made from PVC-coated fiberglass threads, ensuring it remains dimensionally stable, resistant to humidity and heat, rot-free, and colorfast for long-lasting performance. Different types of fiber glass fabrics are available:

- Sergé, for the optimal balance between sun protection and outside view.
- Natté, with a perpendicular weave and different look
- Privacy, which offers more protection from outsiders looking in

Soltis

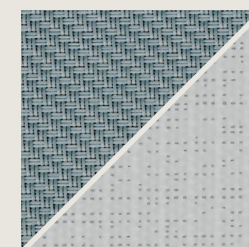


Veozip

POLYESTER FABRIC

This type of fabric is made from a fine mesh cloth with a fire-resistant PVC coating (fire rating M1), resulting in an extremely stable material that resists deformation under stress. Polyester is ideal for horizontal sun protection systems with tensioned fabric, like the ZipShade® Top (Max). For ZipShade®, we also offer Veozip, which combines thermal comfort with a natural look and feel, thanks in part to the inclusion of hemp fibers.

Satiné 21154



Soltis B92

BLACKOUT FABRICS

Our blackout fiberglass and polyester fabrics are perfect for bedrooms. From the front, they look like standard fiberglass (Satiné 21154) or polyester (Soltis B92) fabrics, but the reverse side is equipped with a blackout PVC coating that blocks all light completely, ensuring total darkness when needed.



TIPS FOR CHOOSING YOUR SUN PROTECTION FABRIC



Tip 1: A dark fabric provides the best possible view to the outside.



Tip 2: A lighter fabric allows more daylight to enter, reducing the need for artificial lighting.



Tip 3: A 100% blackout fabric is the best choice for bedrooms.

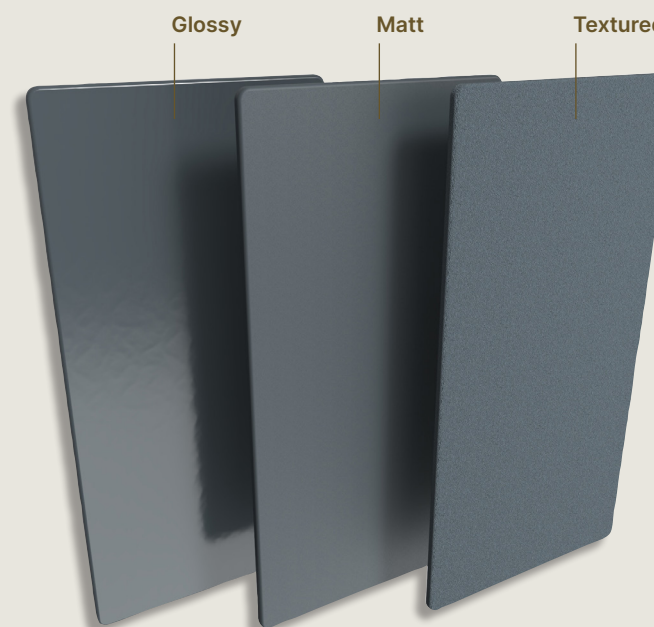


Screen selector

Ask our Renson Ambassadors for fabric samples, or try our digital screen selector to help you choose the best fabric type based on your personal preferences.

COATING COLOR

For the aluminum elements, we offer a wide selection of RAL colors, ensuring seamless integration with your building's style. You can choose from a glossy or matte finish, or opt for a trendy textured coating that is both wear- and scratch-resistant, as well as easy to maintain. The choice is yours!



STRUCTURAL SUN PROTECTION

Do you prefer a standout feature rather than invisibly integrated screens for optimal sun protection? Our structural sun protection solutions offer just that. Horizontal structural sun protection provides shade from the sun during summertime, while still allowing you to enjoy its warmth in the winter season - all without obstructing your view of the outdoors. For even greater flexibility, consider our range of sliding panels. You can easily slide them in front of or away from the windows, controlling exactly how much sunlight you let in or block.

Loggia®



Loggia®

Sunclips®

FIND THE RIGHT STRUCTURAL SUN PROTECTION FOR YOU

STEP 1: SELECT YOUR APPLICATION	49
LOGGIA® PANELS	49
SUNCLIPS® CANOPY	51
STEP 2: SELECT YOUR COLOR	53



Benefits of structural sun protection



ARCHITECTURAL

Structural sun protection enhances the character of your façade. With various styles and installation methods to choose from, you can ensure a perfect match with your architectural design.



VIEWS OUTSIDE ARE RETAINED

A canopy above your window provides shade while maintaining an unobstructed view of the outdoors. This prevents the sun from overheating the interior. Additionally, sliding panels with movable blades offer added privacy, allowing you to control both light and visibility.



Summer



Winter

NATURAL LIGHT TO SUIT YOU

By adjusting the position of your structural sun protection, you control how much sunlight and heat enter through your windows, ensuring the indoors stay comfortably cool.



STEP 1: SELECT YOUR APPLICATION

LOGGIA®, DECIDE OF HOW MUCH LIGHT AND SUN YOU WANT IN YOUR HOME

Loggia panels consist of aluminum frames that can be customized with screens and aluminum or wooden blades. These panels can be fixed in place, used as sliding panels in front of windows, or installed as a freestanding application, offering versatile design options.

PRIVACY

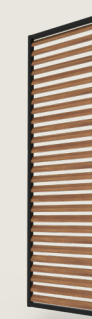
The aluminum or wooden blades are also available in a tilting Privacy version, allowing you to open or close them based on your desired level of light, sunshine, or privacy.



Loggialu



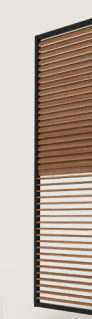
Loggialu
Plano



Loggiawood



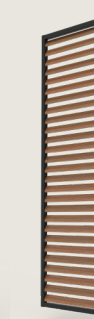
Loggialu
Privacy



Loggiawood
Privacy



Loggiascreen
Canvas



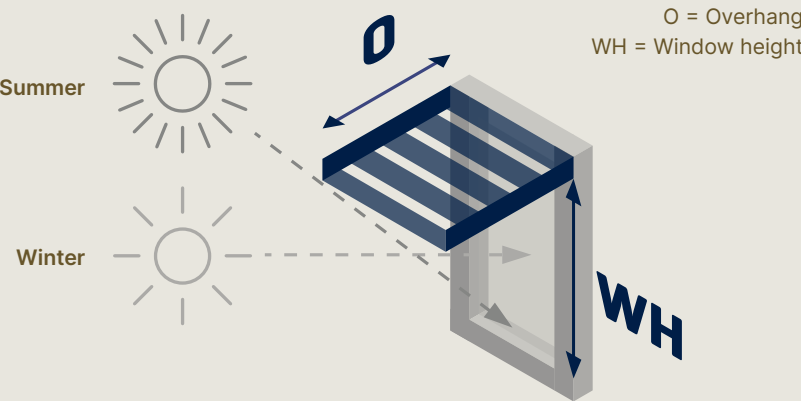
Loggialu
Wooddesign



SUNCLIPS®, BLADES ON HORIZONTAL MULLIONS

Sunclips canopies installed above windows provide the perfect buffer against the intense summer sun while maintaining your view of the outdoors. In winter, you still benefit from the warmth of the sun.

For optimal results, the overhang should be tailored to the orientation of the façade and the height of the window. Our Renson Ambassadors are here to offer expert advice and guidance.

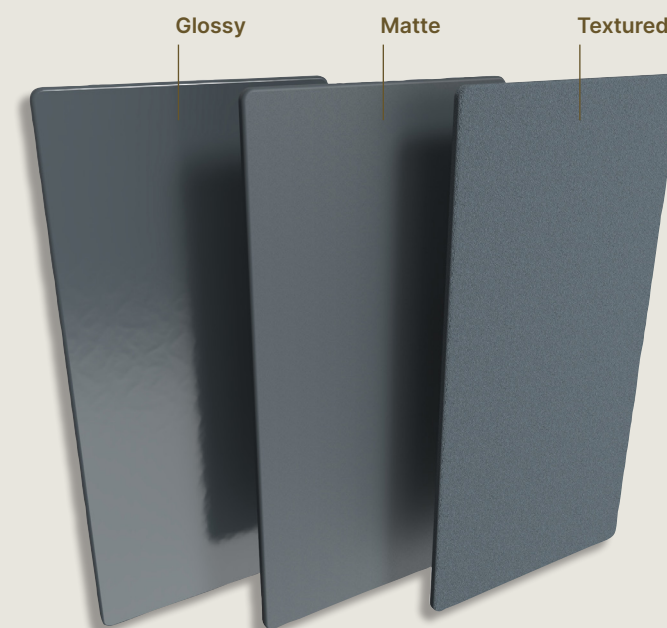


Orientation of the façade	E	SE	S	SW	W
Recommended overhang O	1.2 x WH	0.8 x WH	0.5 x WH	0.8 x WH	1.2 x WH



STEP 2: SELECT YOUR COLOR

For the aluminum elements, we offer a wide selection of RAL colors, ensuring that the parts seamlessly integrate with your building's style. You can choose from a glossy or matte finish, or opt for a trendy textured coating that is not only wear- and scratch-resistant but also easy to maintain. The choice is yours!



GENERAL





Why choose Renson®?



MINIMALIST DESIGN

Our products combine premium design with innovative technology to enhance architectural value. By maximizing the integration of elements and components, we create sleek, minimalist solutions that maintain a clean, modern aesthetic.



ENDLESS CUSTOMIZATION OPTIONS

With the online screen selector, you and our Ambassador can quickly design a custom solution from endless possibilities. You'll create a solution that offers the functionality you need, in the style you prefer - whether rustic or contemporary, for your home or workplace.



MINIMUM MAINTENANCE, MAXIMAL ENJOYMENT

When developing our products, we prioritize ease of use and maintenance. From intuitive remote control via an app to simple cleaning, we ensure that you can enjoy our products for decades with minimal upkeep!



DURABLE INNOVATION

Advanced engineering enhances healthy and comfortable living, both indoors and outdoors. Our attention to detail ensures a long product lifespan and a healthy indoor climate, thanks to durable and energy-efficient solutions. From material selection to production, logistics, and everyday use, we prioritize sustainability and quality at every step.



Warranty

At Renson, we exclusively use high-quality materials, ensuring that you benefit from an extensive warranty on all parts. This gives you peace of mind when it comes to the durability and long-term performance of your sun protection system.

5
YEARS
GENERAL
WARRANTY

7
YEARS
FIXSCREEN
WARRANTY

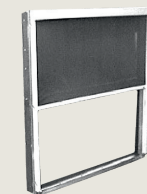
10
YEARS
COATING
WARRANTY

Testing

Independent laboratory tests have confirmed that ZipShade® can withstand extremely high wind speeds, allowing Renson to offer a guarantee of up to 80.78 mph when in the closed position. This is equivalent to a Category 1 hurricane or a force 12 on the Beaufort scale.



Non-windproof fabric sun protection at 18.64 mph



ZipShade® at 80.78 mph



Scan the QR code to watch the video of our wind tunnel tests and see ZipShade® in action!

Frequently asked questions

Why should I choose fabric sun protection over roller shutters?

Fabric sun protection can be used on extremely large windows—up to 299.24 ft²—as well as on sliding windows, corner windows, and curtain walls. In contrast, roller shutters are limited to smaller surfaces and standard window sizes, with much larger cassettes.

Screens prevent your home from overheating without shutting out the light completely, and they allow you to maintain your view of the outside. Additionally, fabric sun protection can be customized to match your home's style, with an extensive range of fabrics and colors available.

What are the best options available for outdoor or indoor sun protection?

Once the sun's rays hit your windows, they begin to heat up the glass, and your home. That's why it's essential to prevent sunlight from reaching the windows in the first place, and the most effective way to do that is with outdoor sun protection. While it may be more expensive than indoor solutions, outdoor sun protection is far more efficient and will help lower your energy bills. In a well-insulated and airtight home, once heat enters, it has nowhere to escape, causing indoor temperatures to rise quickly to uncomfortable levels.

I'm not sure whether to go for air conditioning or outdoor sun protection... What's the best option?

As cooling becomes a bigger challenge than heating, especially in preventing your home from overheating, it's best to stop the heat before it enters. A combination of outdoor sun protection and intensive night cooling offers an eco-friendly, energy-efficient alternative to air conditioning. This approach helps maintain comfortable indoor temperatures while reducing reliance on energy-consuming cooling systems.

Can sun protection also prevent glare on my television and computer screen?

Absolutely! However, the choice of fabric is key to meeting your specific needs. It's important to consider in advance whether your priority is preventing overheating, reducing reflections, maintaining a clear view of the garden, or ensuring privacy. Depending on your preferences, both indoor and outdoor Renson sun protection solutions can provide the right balance with the appropriate fabric.

Can I use my fabric sun protection when it rains?

Yes, if your fabric sun protection gets wet during an unexpected shower, you can roll it up and lower it again in better weather to dry it out. However, to prevent mold and stains, avoid keeping the wet fabric rolled up for more than three days. For fabrics with full-width crystal windows, we recommend only rolling them up when fully dry..

Can I use my fabric sun protection when it's freezing, snowing or raining heavily?

In strong winds, you can operate your screen as usual, as Renson offers a high wind resistance guarantee up to 80.78 mph. However, it can be hard to gauge wind strength, so you may want to automate your sun protection with a wind sensor. During freezing weather, it's best not to operate your system - leave it in place until temperatures rise above freezing.

Can I also use fabric sun protection to darken a room — a bedroom, for example?

Yes, when equipped with blackout fabric, your sun protection can darken any room, including bedrooms. With our Connect&Go technology, fabrics can easily be replaced at a later stage. ZipShade® Minimal also offers the option of a silent indoor motor, making it an ideal choice for darkening bedrooms.

Will the sun cause my fabric to discolor?

We use only high-quality fabrics, and all our fabrics come with a five-year warranty. If you notice discoloration over time, simply contact your Renson Ambassador to replace them.

How do I make sure my fabric sun protection lasts a long time?

Our products are designed to last, but regular maintenance is key to extending their lifespan. Maintenance is straightforward, involving just cleaning the fabric and profiles.

Can my sun protection fabric be customized?

Yes, your Renson Ambassador can help you customize your sun protection to suit your project. They will take precise measurements and order the elements according to your specifications.



**BUILDING OR RENOVATION PLANS?
VISIT OUR SHOWROOMS IN BELGIUM**

NOA – KUISEM

Monday to Friday: 9 a.m. to 5 p.m.
1st and 3rd Saturday: 10 a.m. to 2 p.m.
Schedule an appointment online via hello@noa-outdoor.com

Polydore Rensonstraat 8 • 9770 Kruisem • Belgium
noa-outdoor.com

EXIT 5 – WAREGEM

Monday to Friday: Monday to Friday: 8:00 a.m. – 12:00 p.m. and 1:30 p.m. – 6:00 p.m.
Saturday: 9:00 a.m. – 12:00 p.m.
Schedule an appointment by phone on +32 56 62 96 87 or online via exit5.be

Maalbeekstraat 10 • 8790 Waregem • Belgium



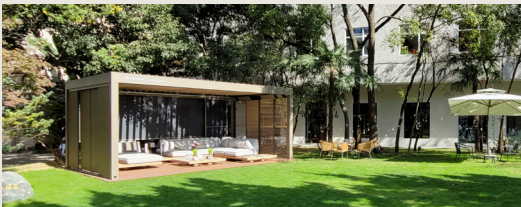
NY SHOWROOM – USA

255 5th Avenue • 6th Floor • NY 10016 • ernestny.com



SHANGHAI SHOWROOM – CHINA

No. 33 • Lane 672 • Changle Rd • Jingan District
Shanghai, China
Tel: +86 21 6418 2566



Where do I buy Renson® products?

To ensure that our high-quality and durable products are also installed professionally, we have established a network of well-trained Ambassadors and Installers.



Our Premium Ambassadors have years of experience selling and installing Renson products. They stay current with the full product range and provide the highest level of professional support, ensuring the best possible service.



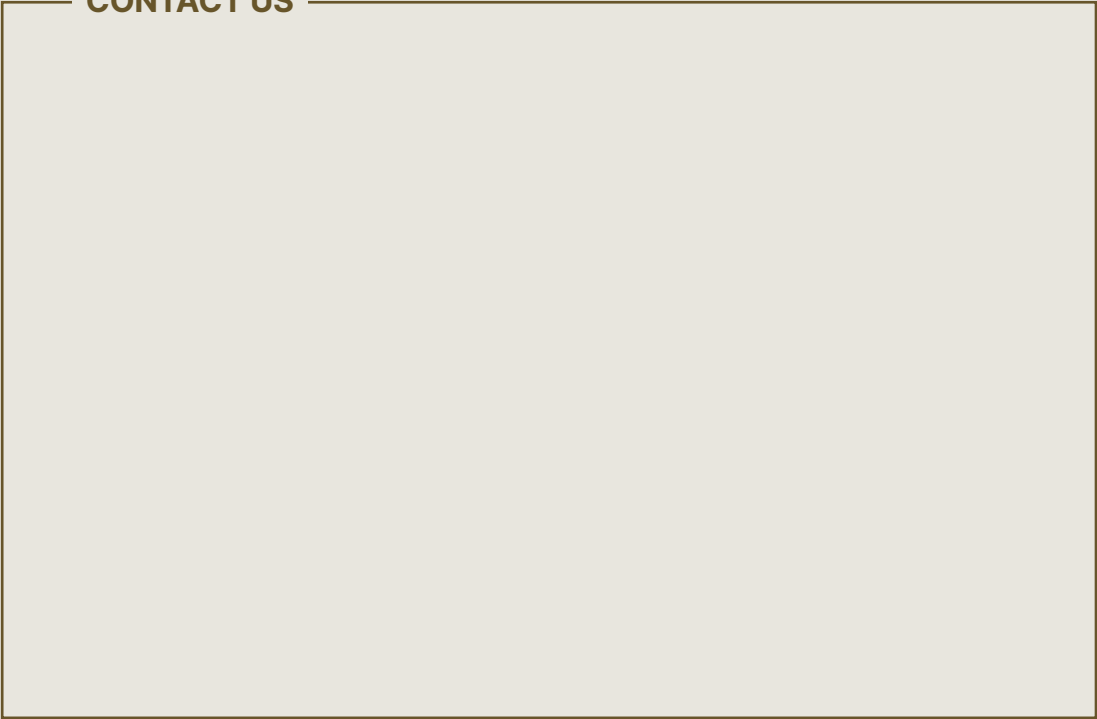
Our Ambassadors can showcase our products in their showrooms and ensure professional, precise installation.. They also provide top-tier after-sales service, guaranteeing continued support and satisfaction.

See renson.net/en-us/dealers for more.

DOWNLOAD OUR OTHER BROCHURES WWW.RENSON.NET



CONTACT US



All photos shown are for illustration purposes only and merely serve as an example of a practical situation. The actual product may vary due to adjustments to the product. Renson® reserves the right to make technical changes to the products shown. The latest brochures can be downloaded from [renson.net](https://www.renson.net).

