

ASSOCIATE PARAMETER GUIDELINE

How to associate our blind parameters to your window family?

- 1 Load Renson_Fixvent_Generic.rfa in your window family
- 2 Select the Renson Fixvent family type(s) you want to load in your project
- 3 Place the Renson Fixvent in your window family [preferably on 'Ref. Level']
- 4 Select the Fixvent model you just inserted. On the tab 'Properties > Dimensions'. You can associate the following three parameters:
 - Input_Fabric_Roller_Height (A)
 - Input_Total_Height = window height + box height (B)
 - box height = 132 mm for every Fixvent box type
 - Input_Total_Width (C)
- 5 On the tab 'Properties > Materials and Finishes', you can associate this parameter with one of your material parameters

By the tooltips, you can directly see the parameter's description

Input_Fabric_Roller_Height

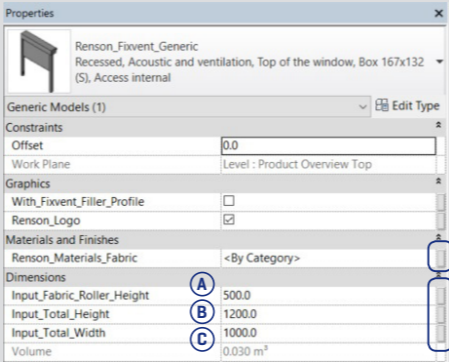
Associate this parameter with your roller height parameter. You can create an extra roller height parameter in your window family and associate these two parameters.

Input_Total_Height

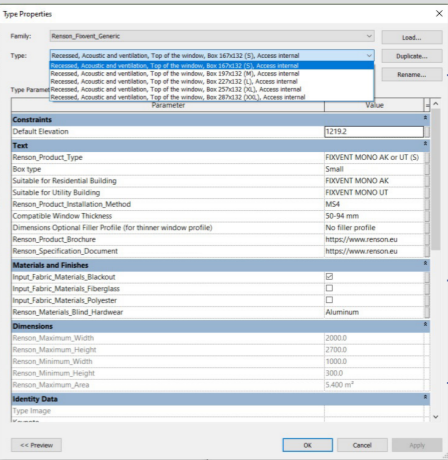
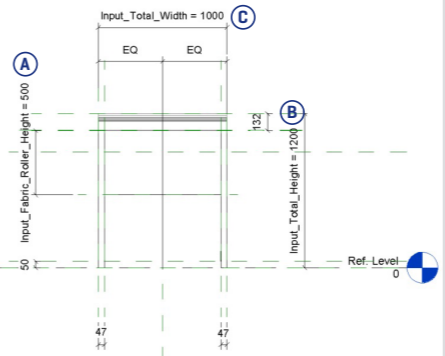
Associate this parameter with your window parameter. This parameter is the Fixvent finished height (FH). FH = side guiding channels + box
Box = 132 mm

Input_Total_Width

Associate this parameter with your window parameter. This parameter is the Fixvent width (W). W = side guiding channels + fabric width



Overview parameters in Fixvent Family

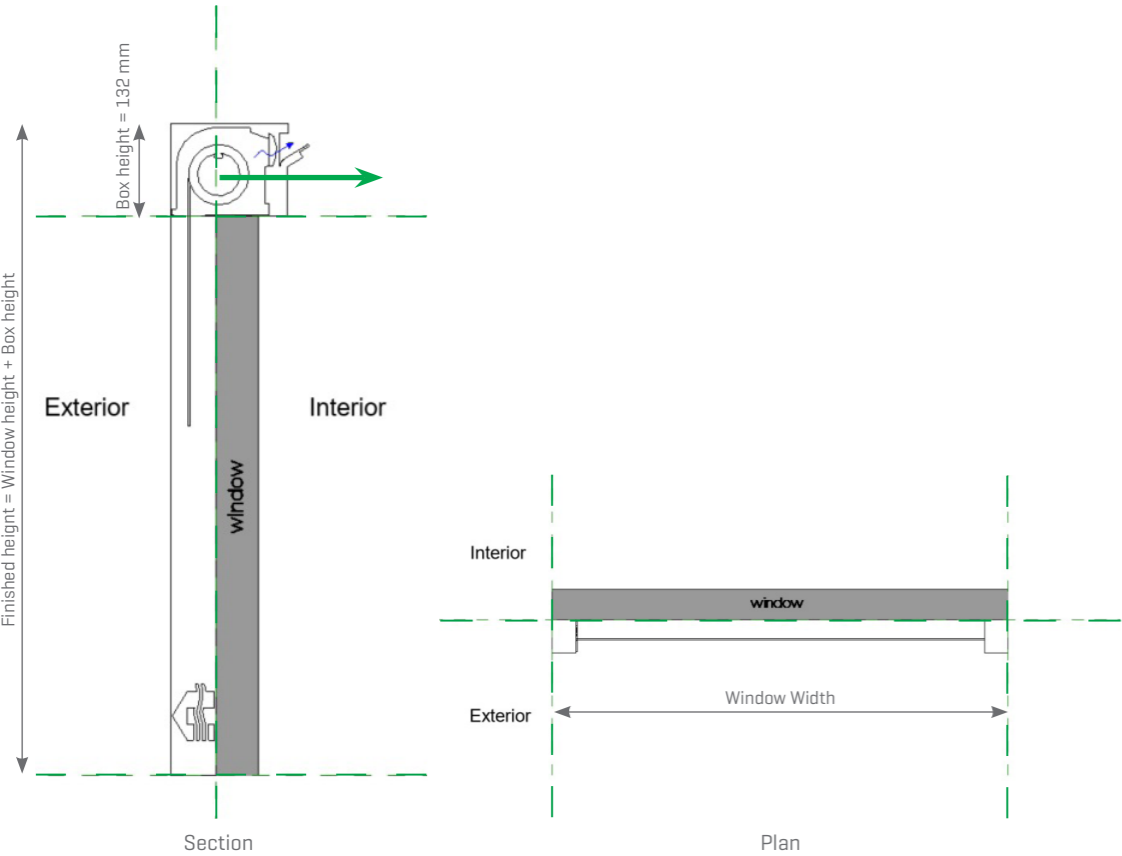


- Select your Fixvent type
- Select your fabric type
- Dimension constraints will appear

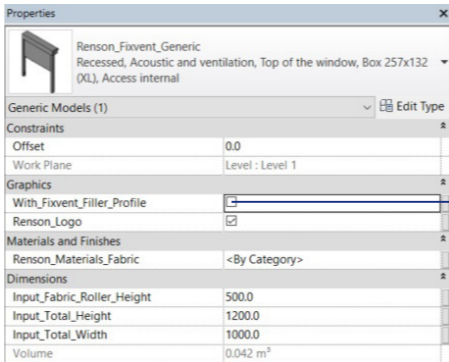
POSITIONING FIXVENT GUIDELINE

The concept drawings below show how to align the Fixvent with your window

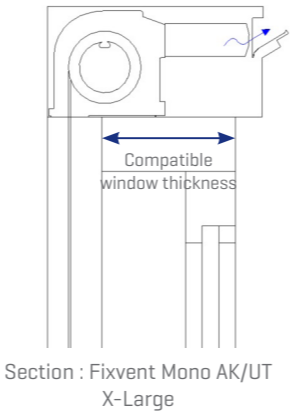
← Direction in which fabric roller should be demounted



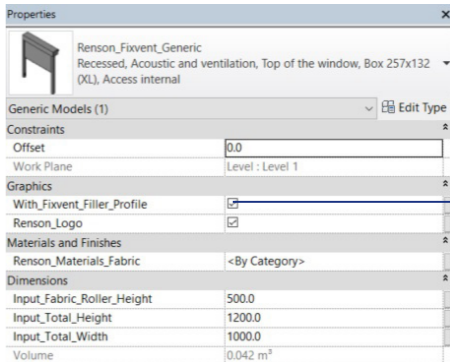
FIXVENT FILLER PROFILE SELECTOR GUIDELINE



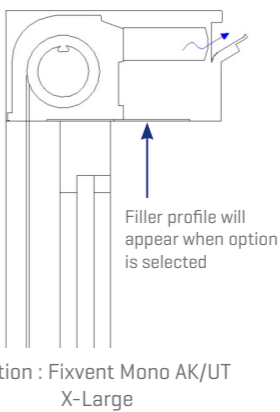
Use your compatible window thickness



| Box type | Compatible window thickness |
|----------|-----------------------------|
| Small | 50-94 mm |
| Medium | 95-124 mm |
| Large | 125-154 mm |
| X-Large | 155-184 mm |
| XX-Large | 185-215 mm |



Use Fixvent filler profile option [For smaller window profile]



| Box type | Dimensions optional filler profile |
|----------|------------------------------------|
| Small | no filler profile |
| Medium | filler profile 30 mm |
| Large | filler profile 60 mm |
| X-Large | filler profile 90 mm |
| XX-Large | filler profile 120 mm |